



FCC Gliding 2018

Task briefing 1

8th April 2018





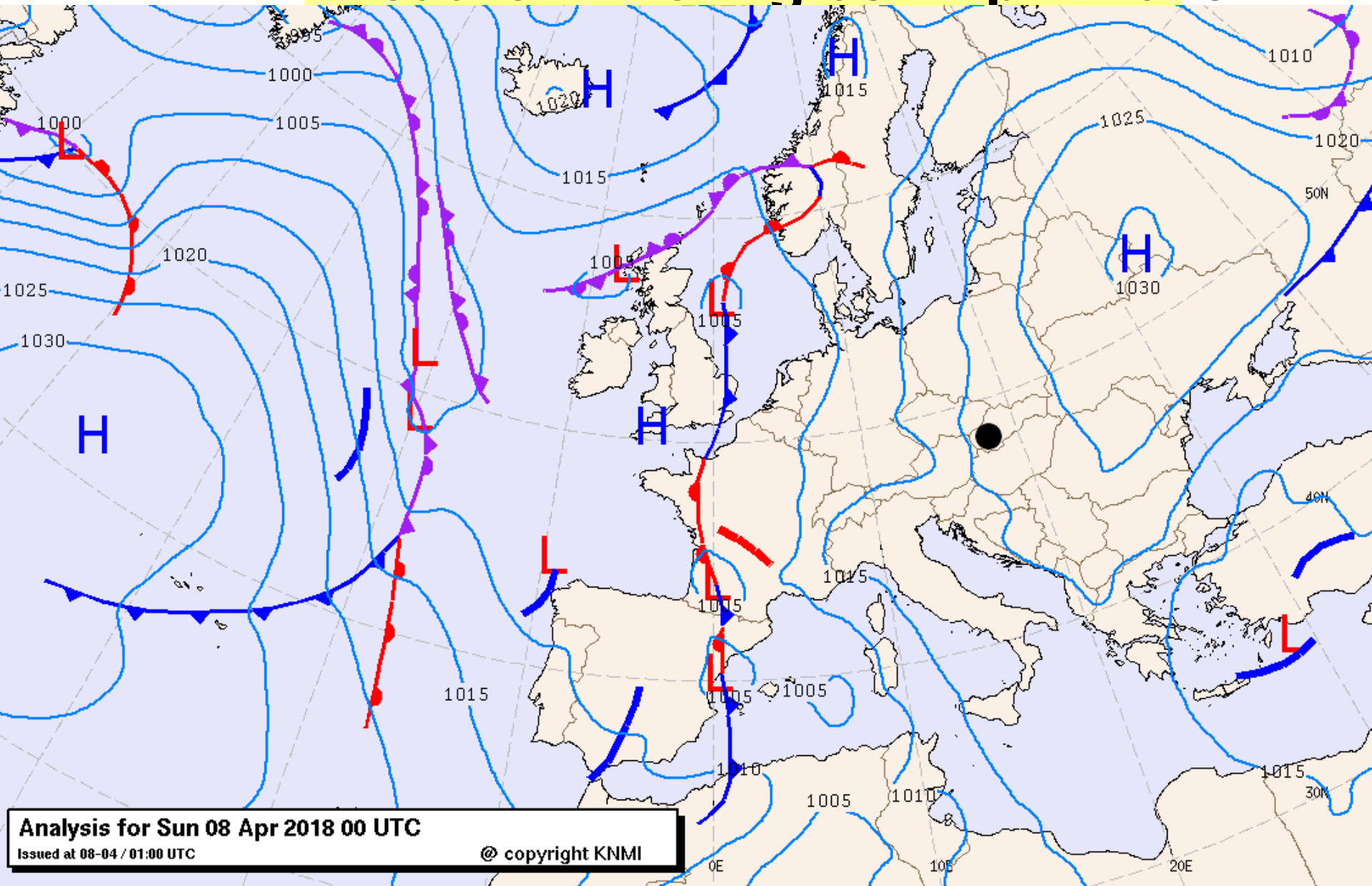
Weather

Weather report

András Gyöngyösi



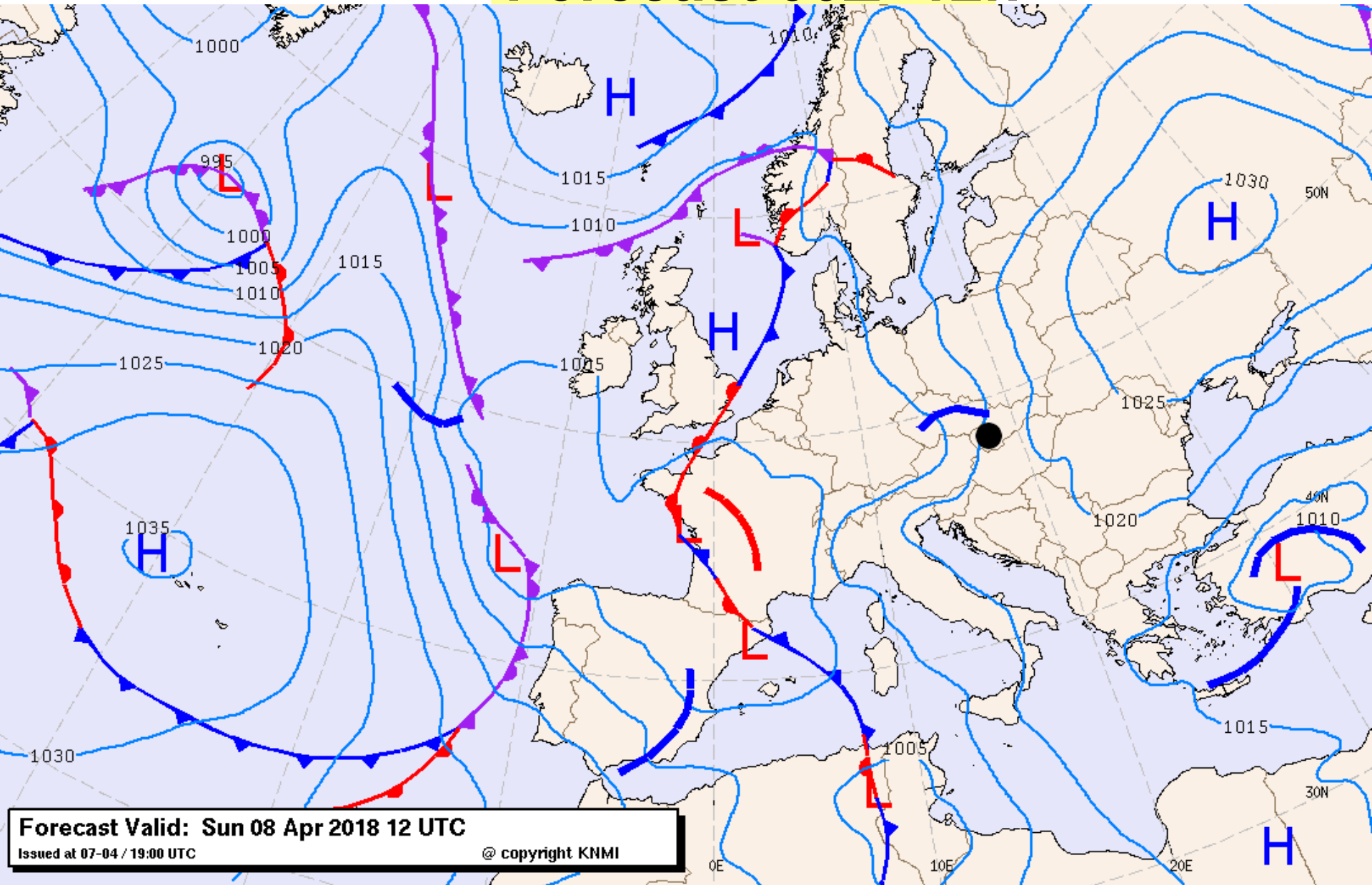
Weather Briefing 08th April 2018



Analysis for Sun 08 Apr 2018 00 UTC
Issued at 08-04 / 01:00 UTC
© copyright KNMI

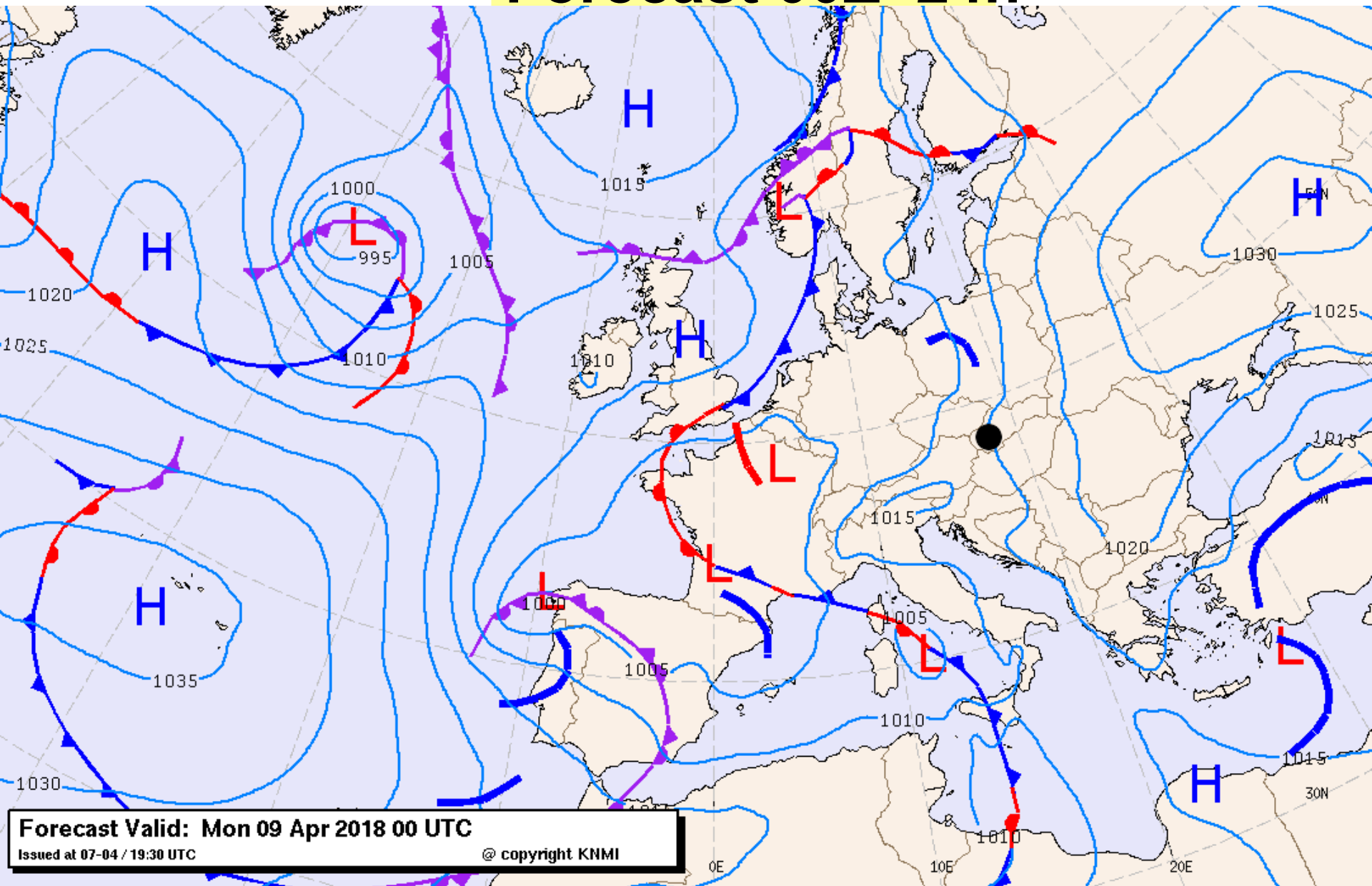
00Z

Forecast 00Z+12h



12Z

Forecast 00Z+24h



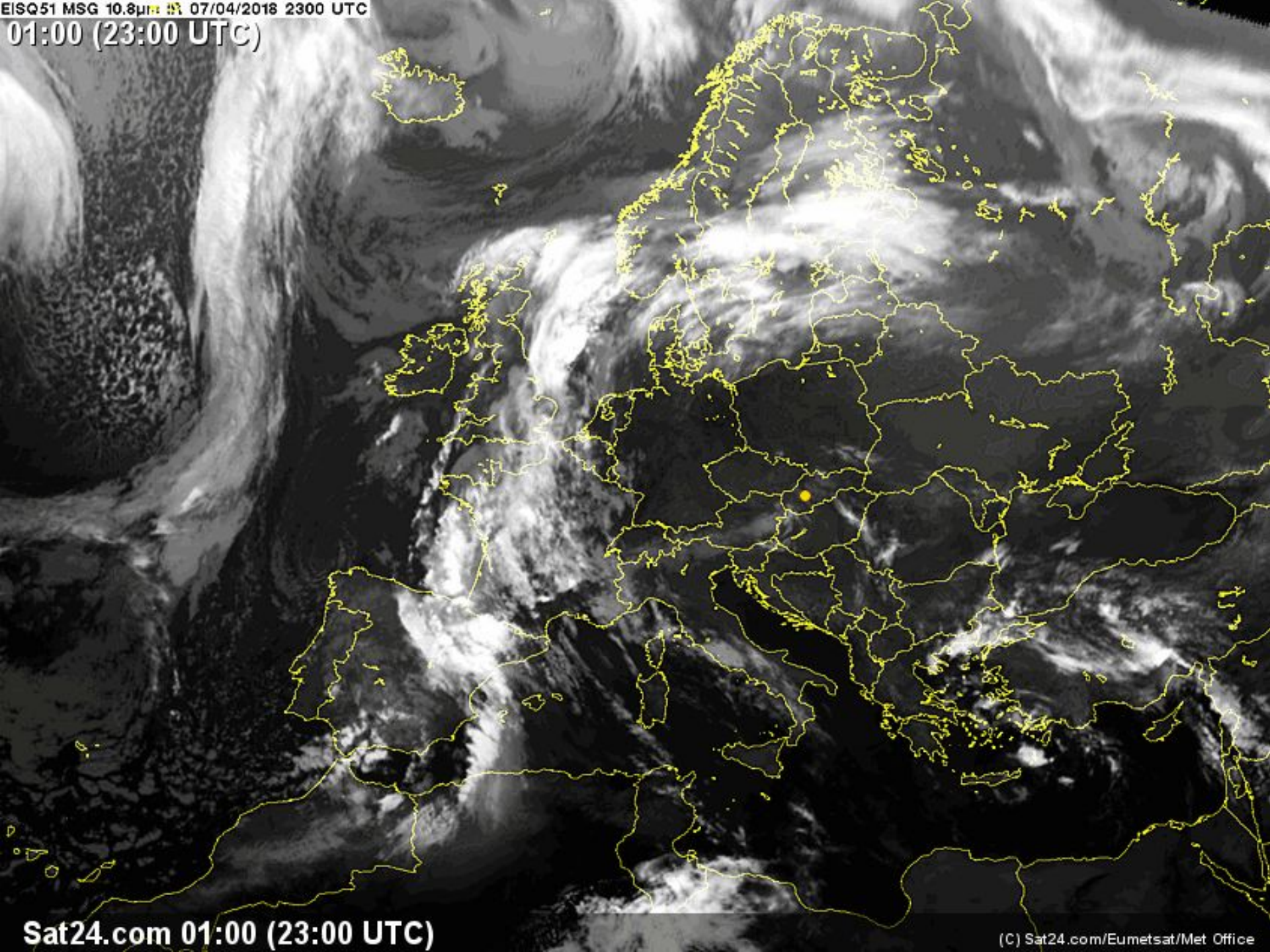
Forecast Valid: Mon 09 Apr 2018 00 UTC

Issued at 07-04 / 19:30 UTC

@ copyright KNMI

00Z+24h

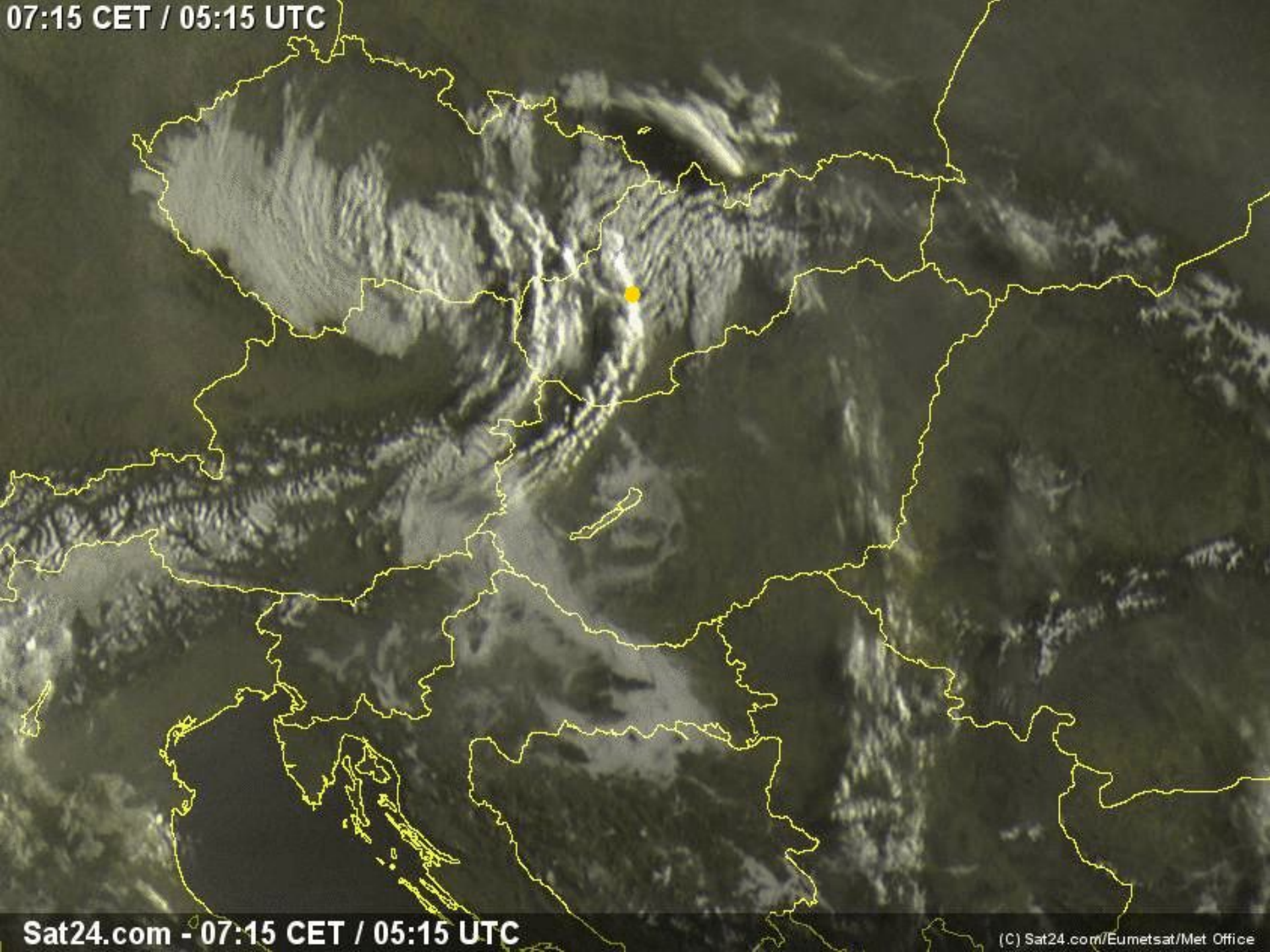
EISQ51 MSG 10.8µm 07/04/2016 2300 UTC
01:00 (23:00 UTC)



Sat24.com 01:00 (23:00 UTC)

(C) Sat24.com/Eumetsat/Met Office

07:15 CET / 05:15 UTC



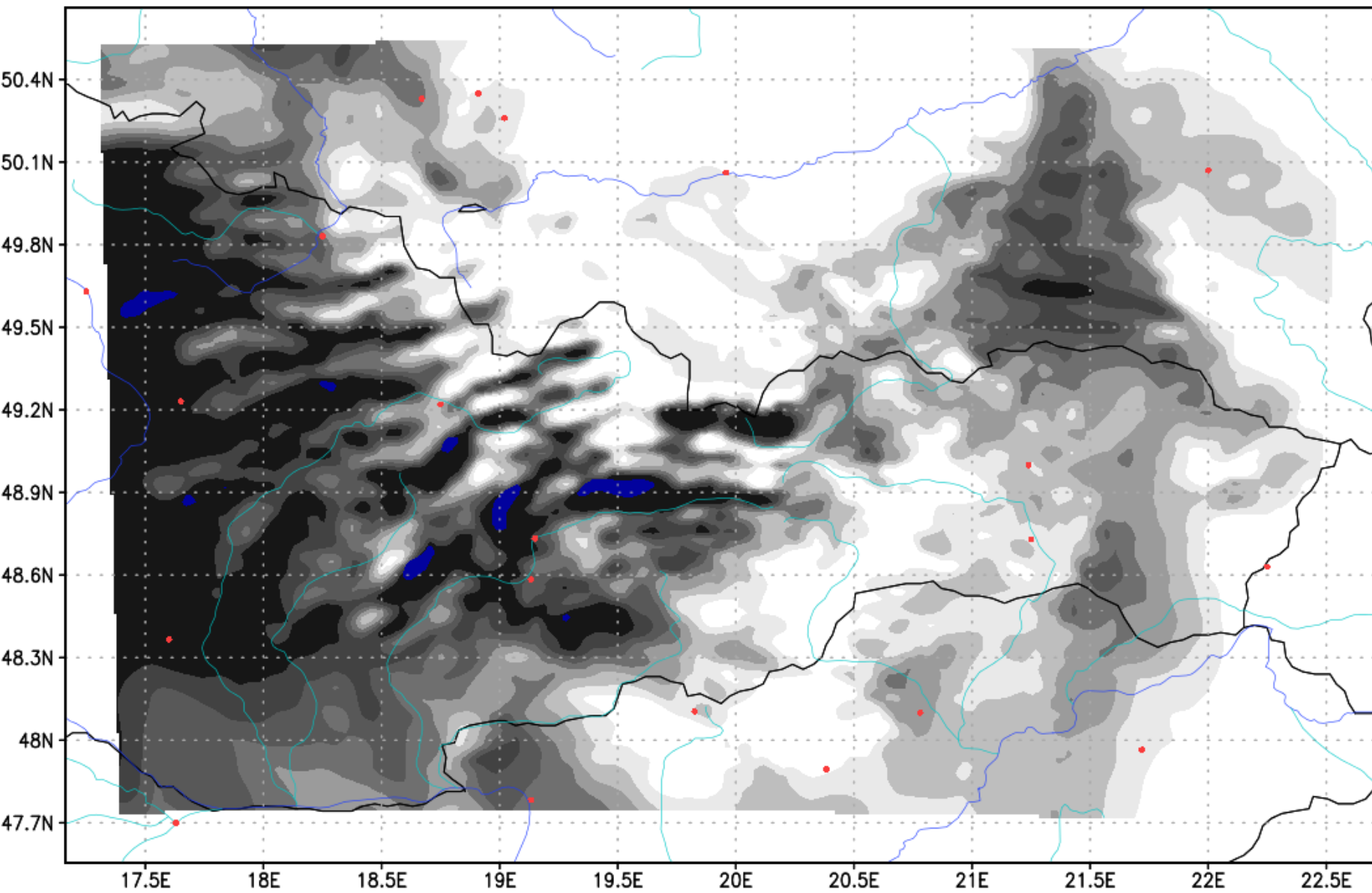
Sat24.com - 07:15 CET / 05:15 UTC

(C) Sat24.com/Eumetsat/Met Office

08.04.2018 06:50 LSEC

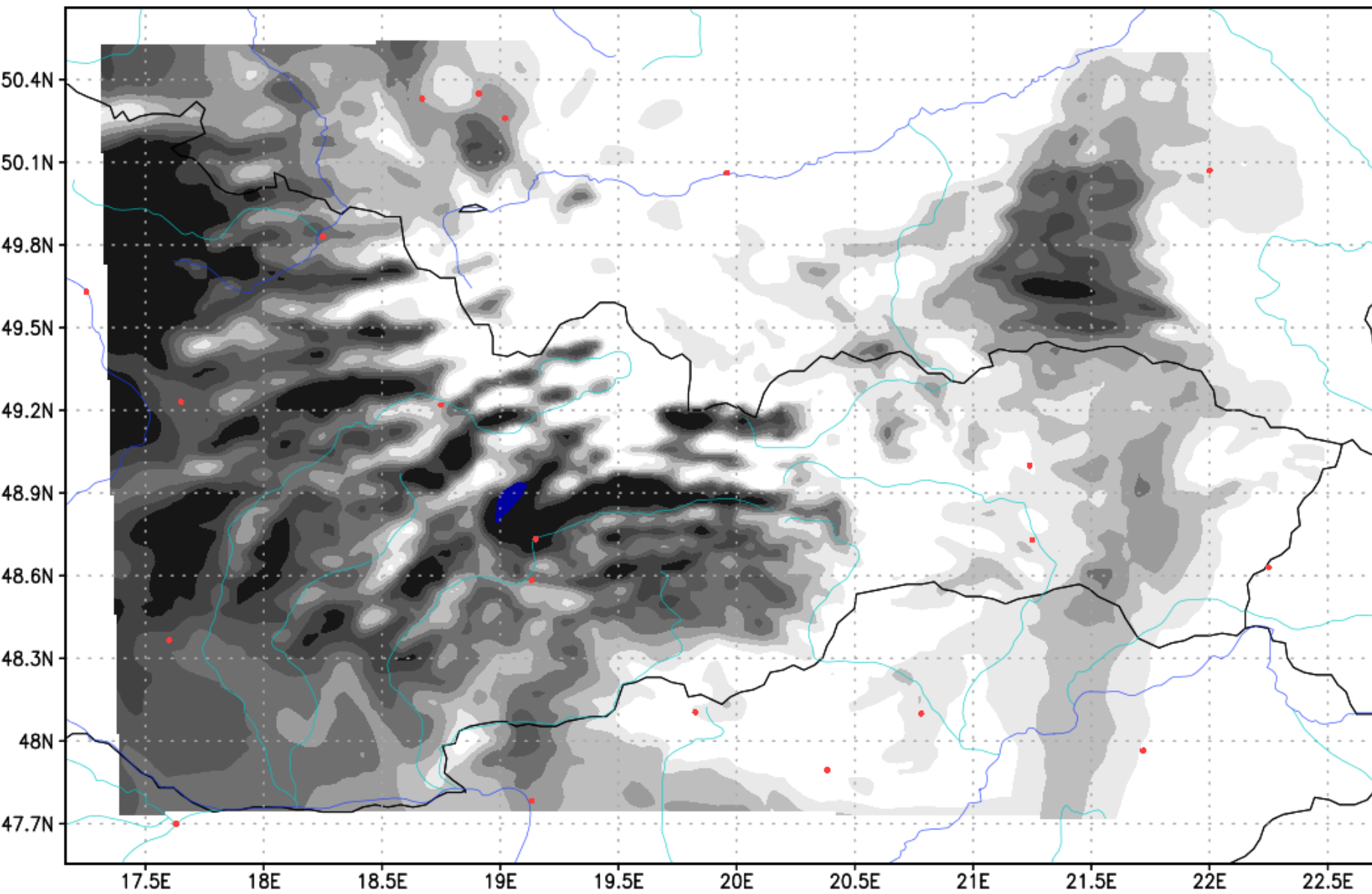


Total cloud and precip @ 2018-APR-08 08:00Z

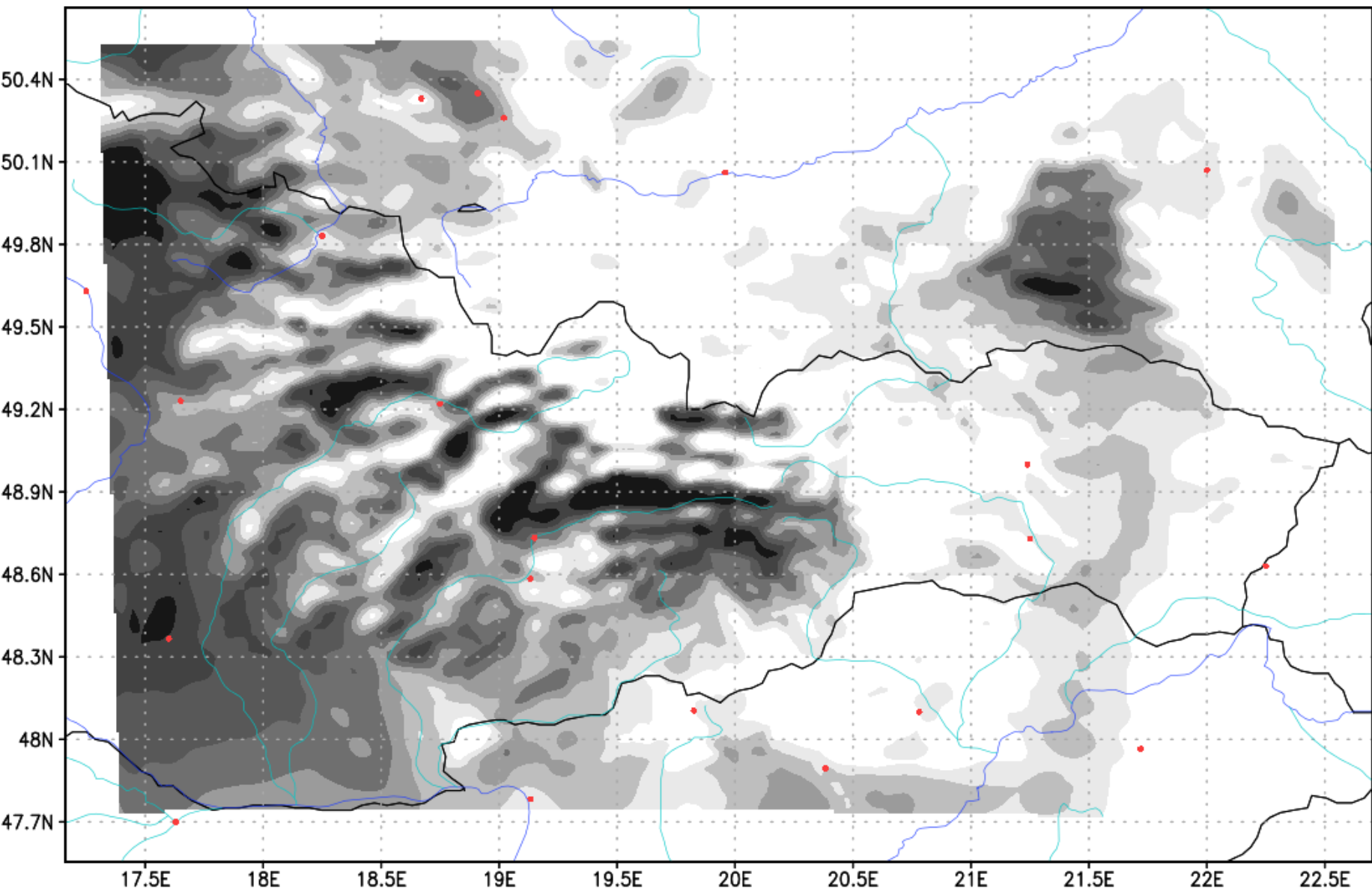


GrADS: IGES/COLA

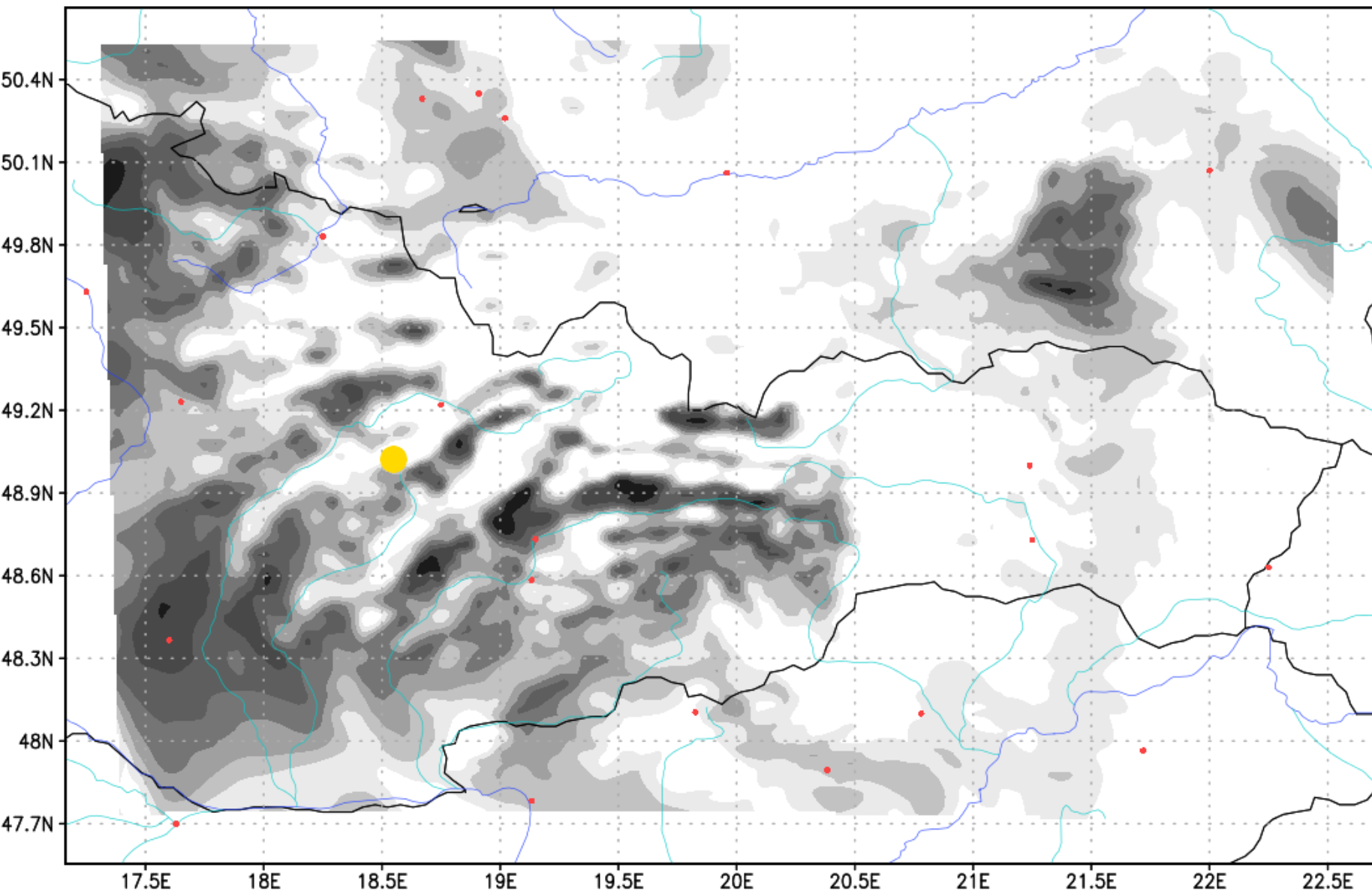
Total cloud and precip @ 2018-APR-08 09:00Z



Total cloud and precip @ 2018-APR-08 10:00Z



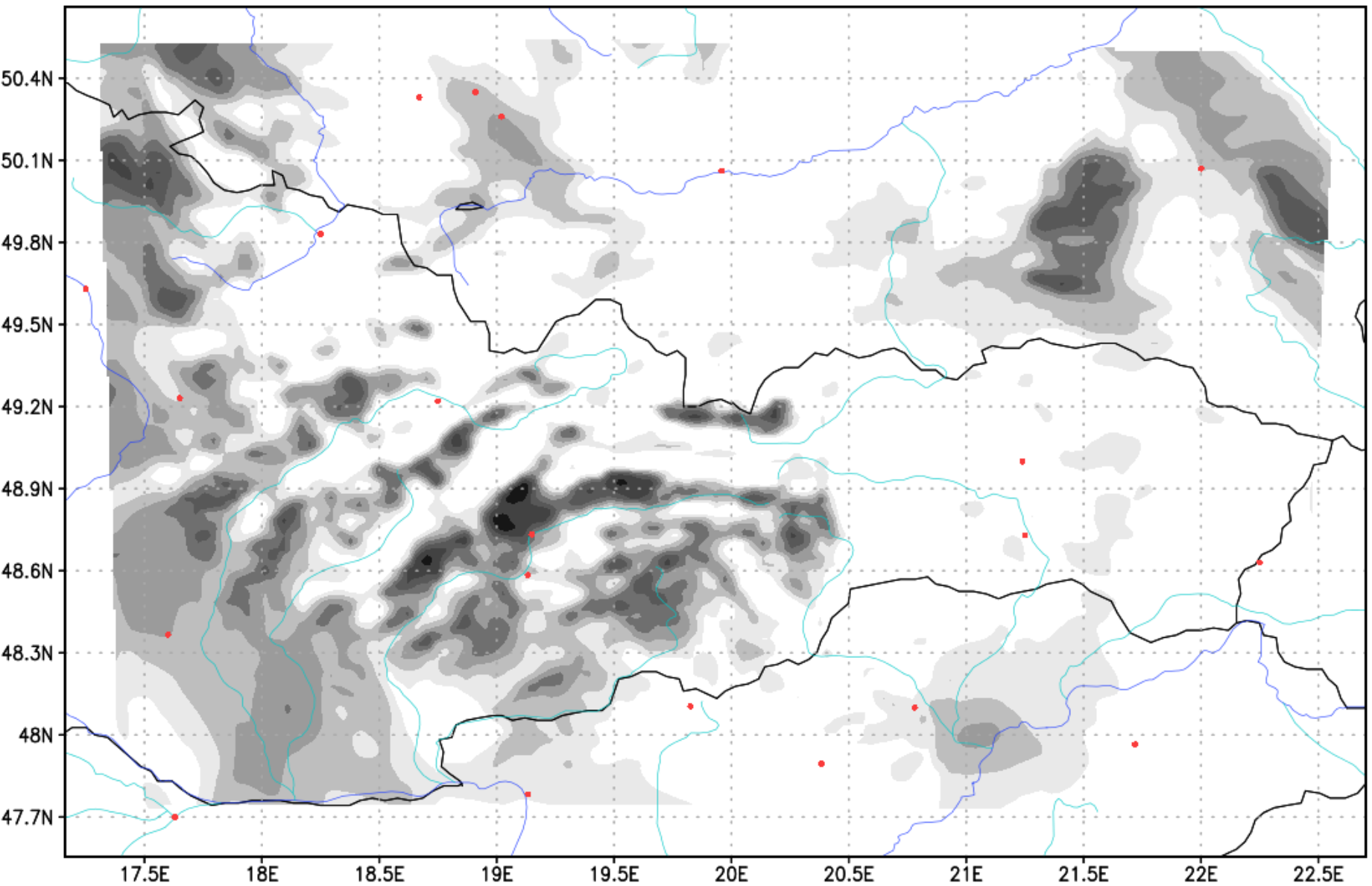
Total cloud and precip @ 2018-APR-08 11:00Z



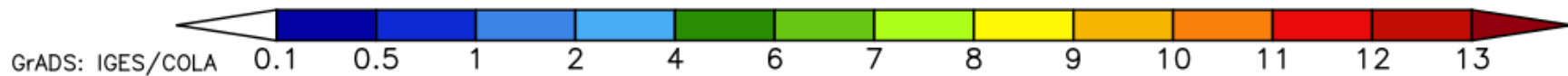
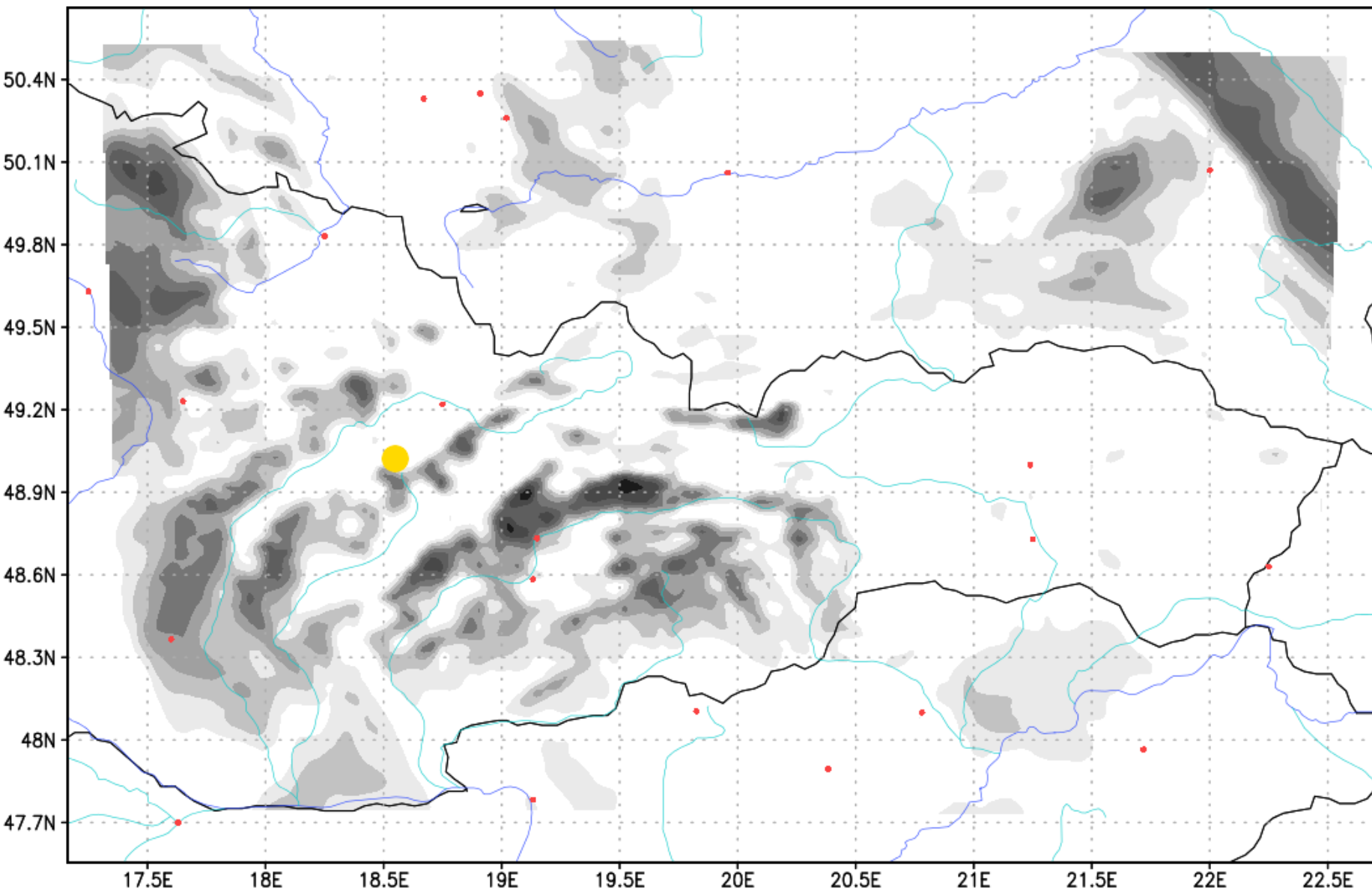
GrADS: IGES/COLA

0.1 0.5 1 2 4 6 7 8 9 10 11 12 13

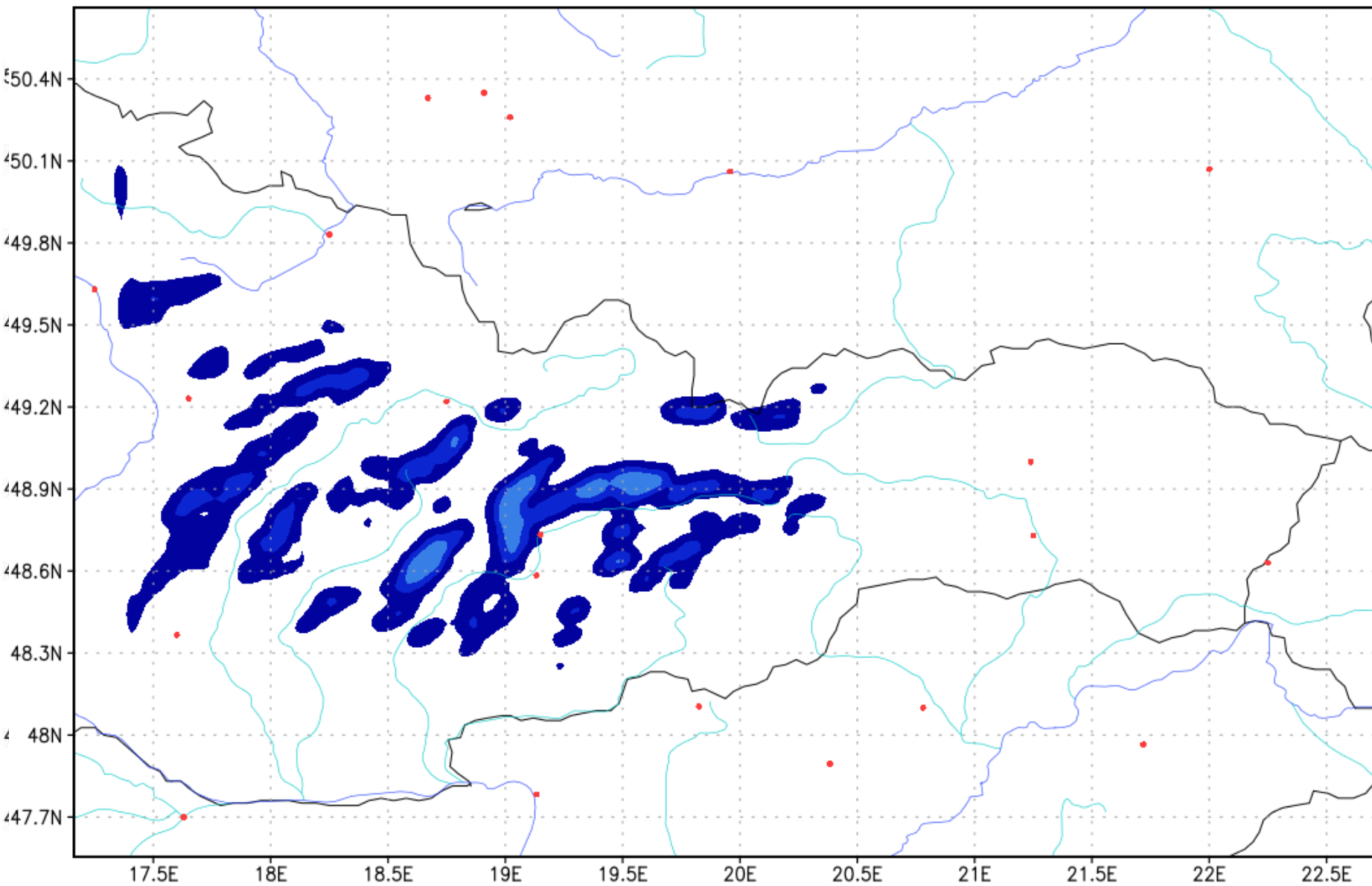
Total cloud and precip @ 2018-APR-08 12:00Z



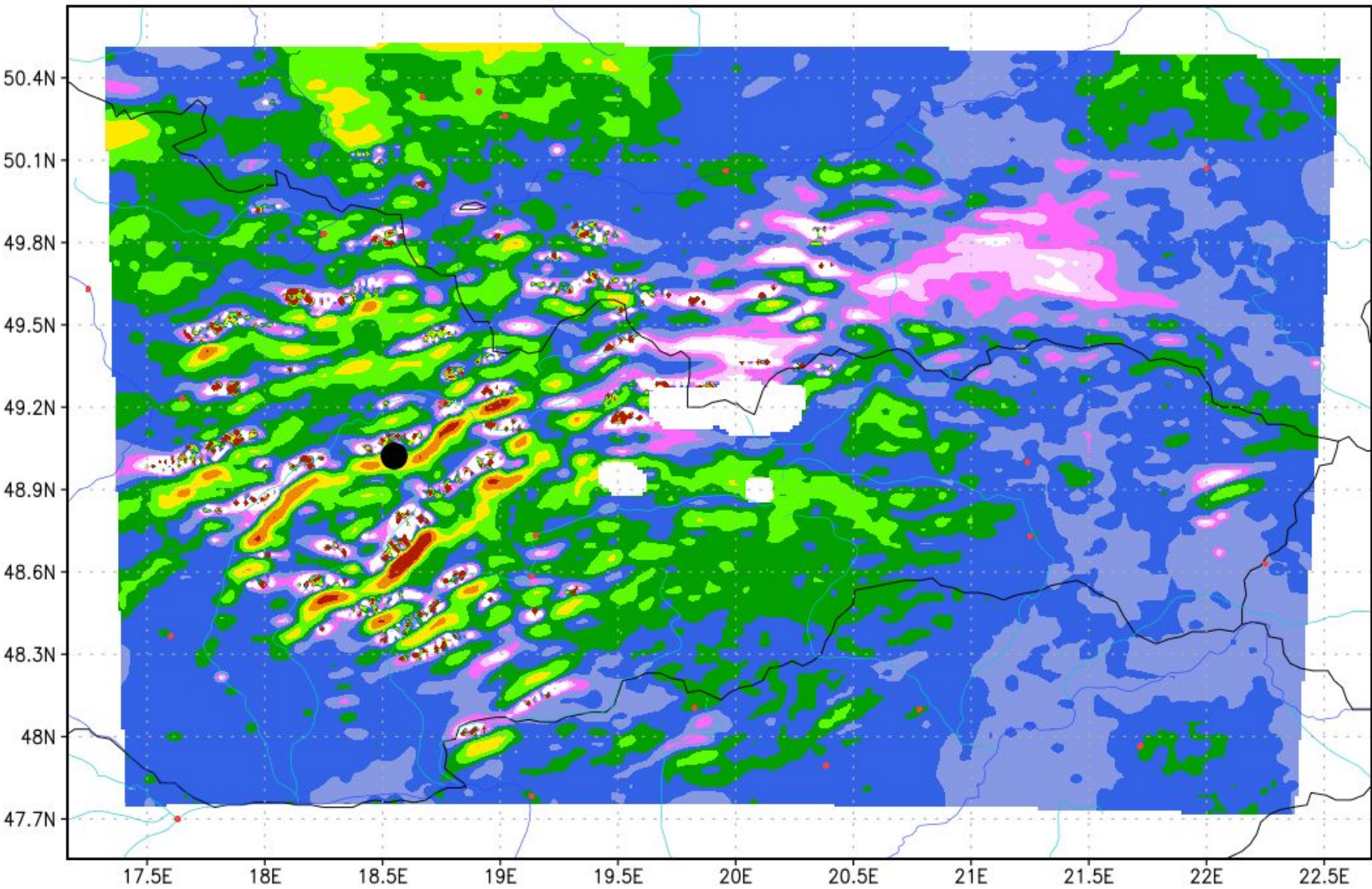
Total cloud and precip @ 2018-APR-08 13:00Z



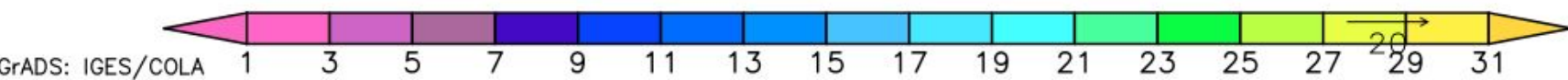
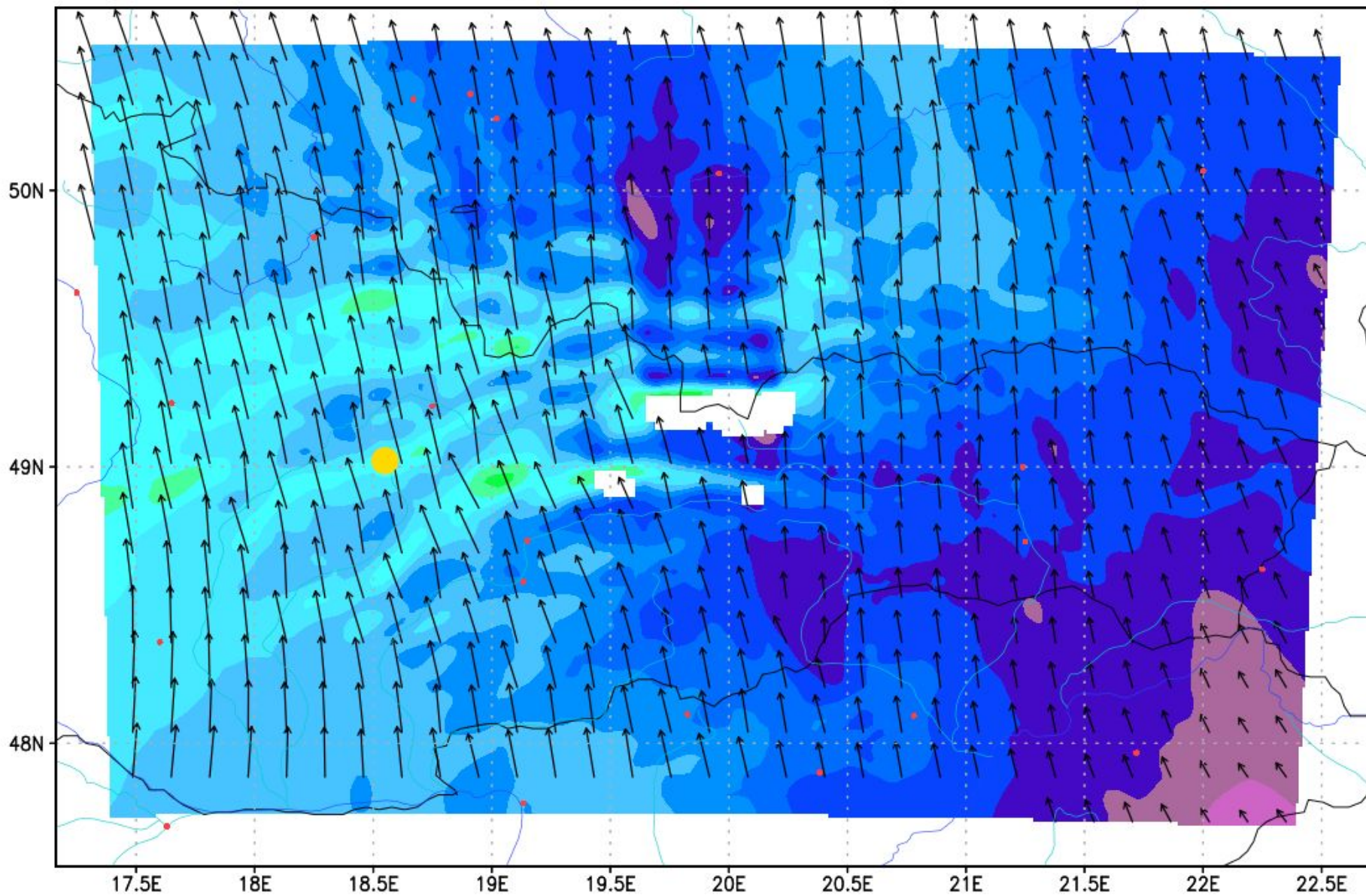
Total Precipitation [mm] @ 2018-APR-08 00-18Z



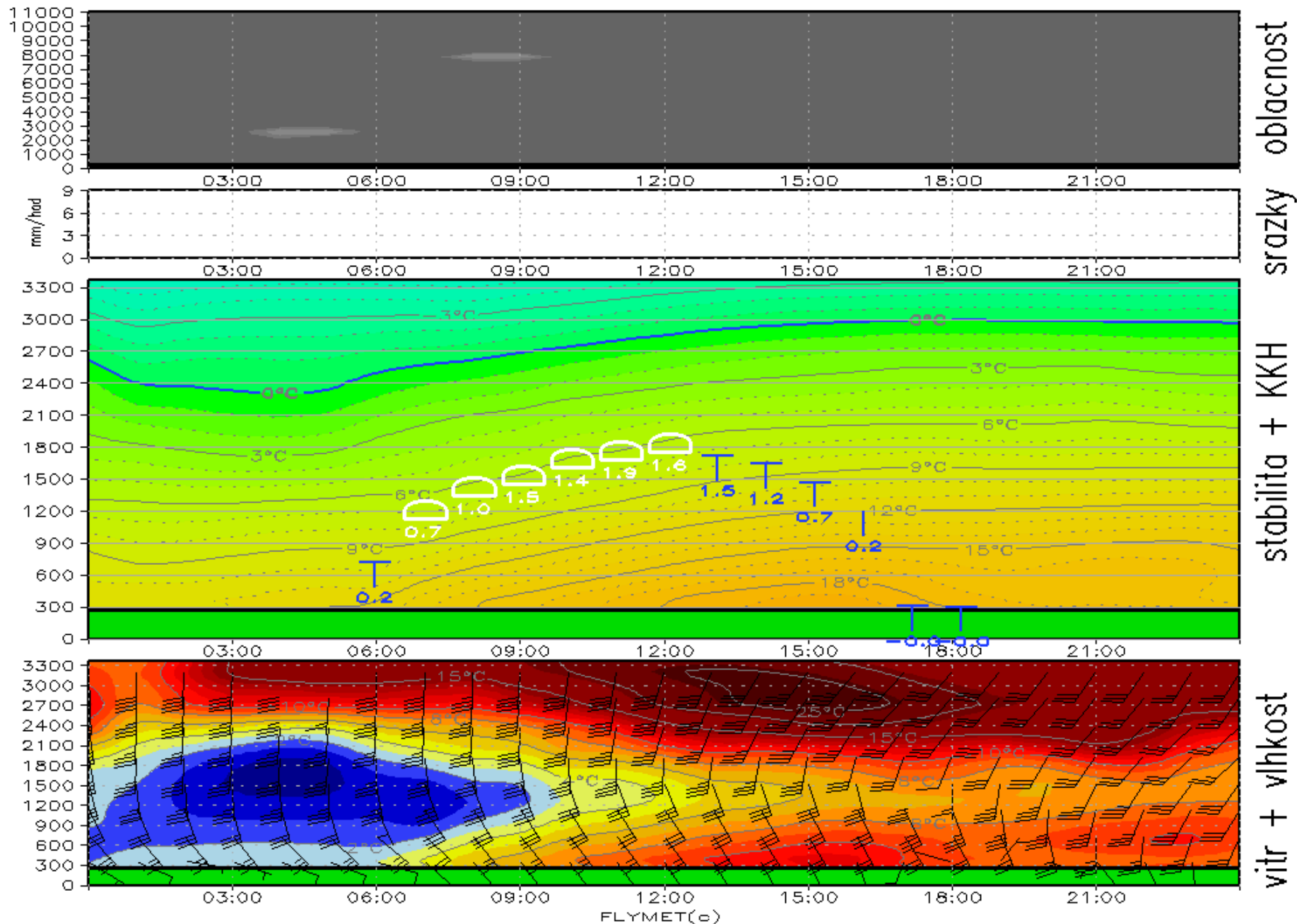
XC score [%] 08Z08APR2018 -- 16Z08APR2018



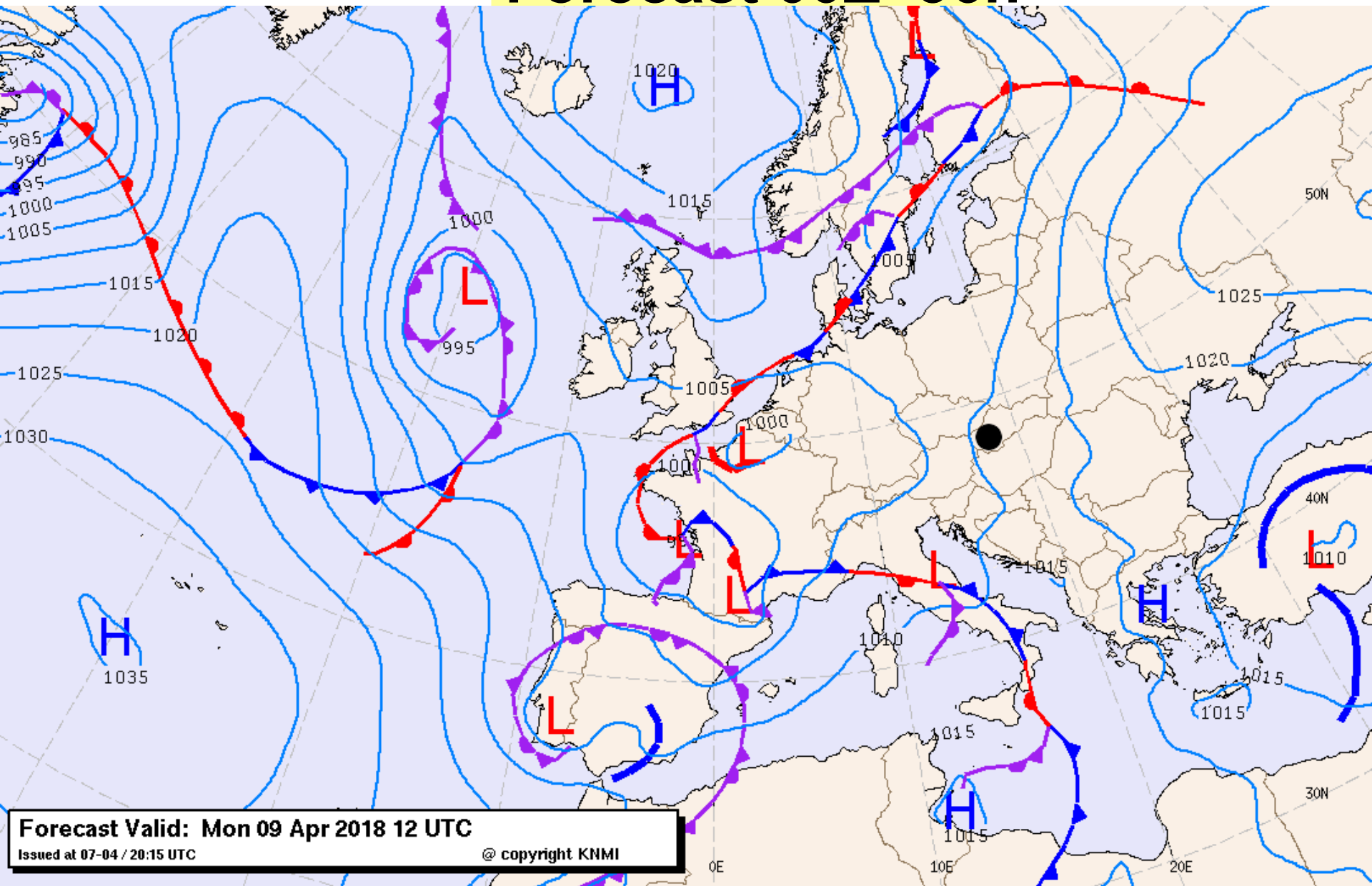
1500m wind [m/s] at 2018-APR-08 11:00Z



Meteogram PRIEVIDZA na nedeli 08.04.2018



Forecast 00Z+36h





Safety briefing Radio FREQs

For the championship the following frequencies will be used:

Call sign **PRIEVIDZA GROUND** (FREQ 123,055 MHz)- for take off and for all airport operations at the contest site;

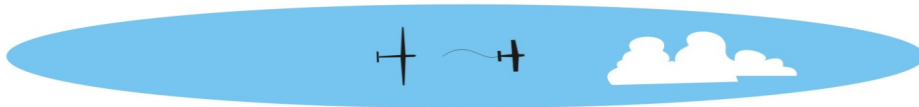
Call sign **PRIEVIDZA TRAFFIC** (FREQ 122,60 MHz) - for all airport operations, for competition purposes – start line, finish line;



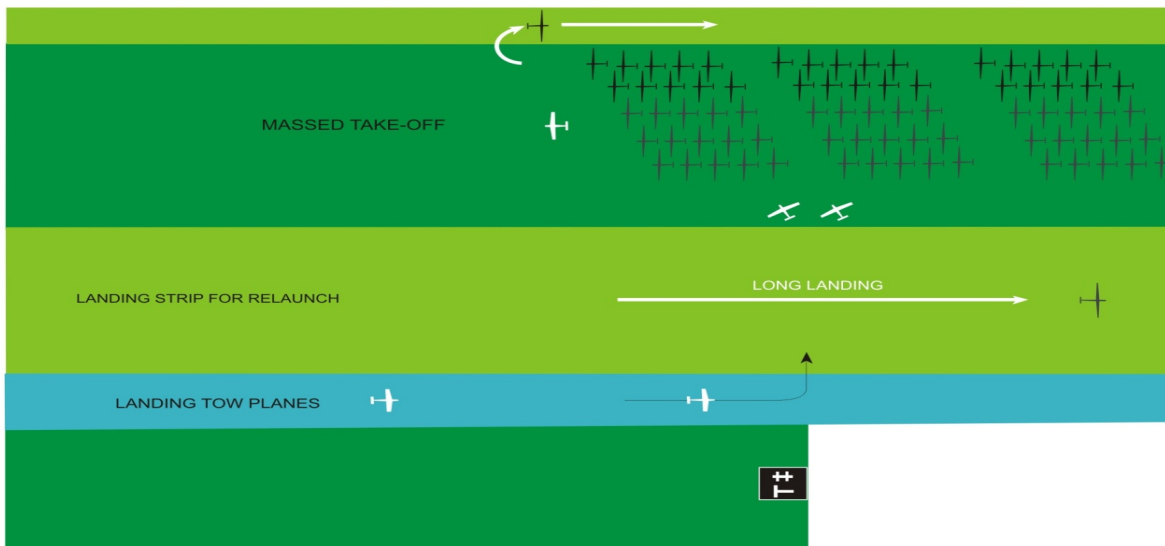
Take-off from the runway 22 Alternative A



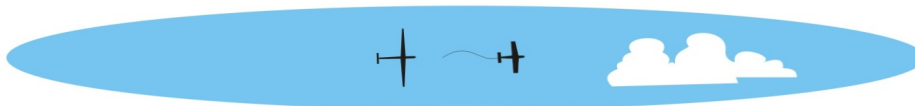
SECTOR FOR RELEASE



A



SECTOR FOR RELEASE



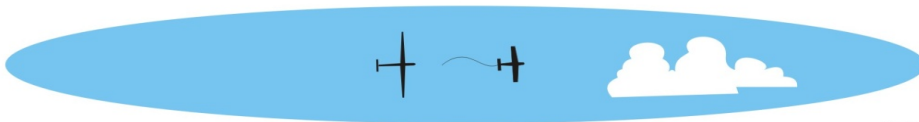
LAUNCHING
AND AIR TOW
PROCEDURES
FOR RUNWAY
220
PRIEVIDZA AIRFIELD



Take-off from the runway 22 Alternative B



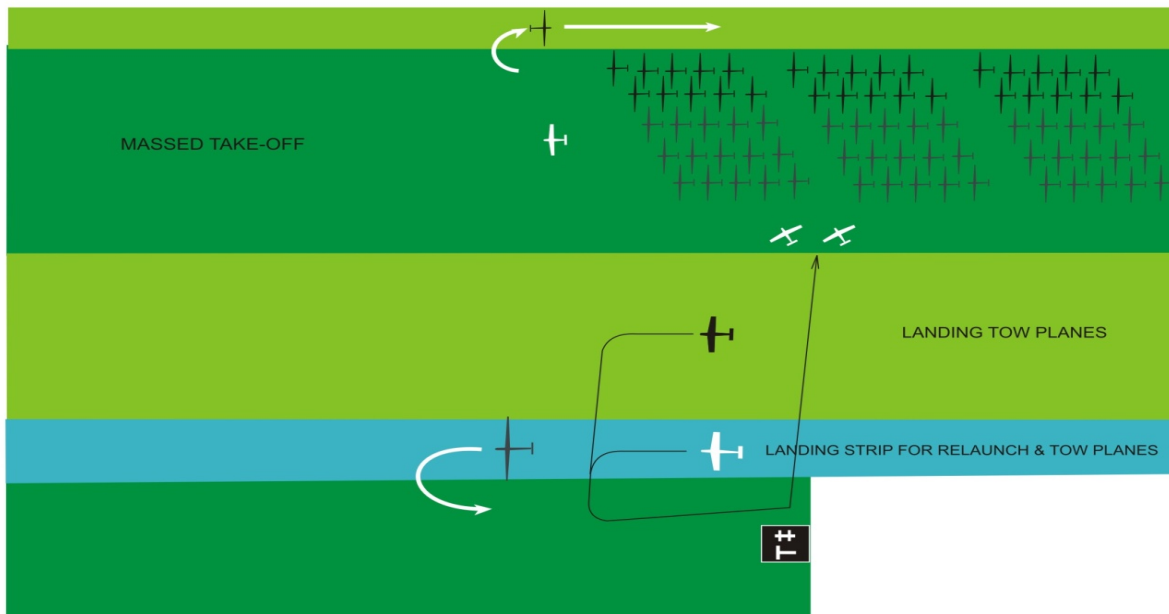
SECTOR FOR RELEASE



CASTLE



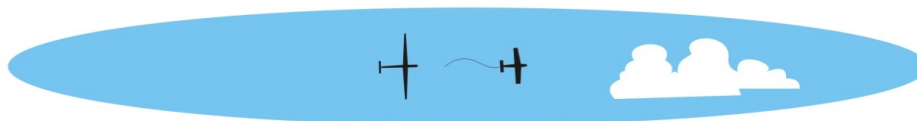
B



RWY 220



SECTOR FOR RELEASE



LAUNCHING
AND AIR TOW
PROCEDURES
FOR RUNWAY
220
PRIEDVIZA AIRFIELD



Landing procedure

Arrivals will be from the north

**Minimal height on the finish ring 410m AMSL
(150m AGL LZPE)**

**The road in front of the airfield will be closed
during landing of the main group.**





Safety briefing *Release areas*

Do not circle in release point!!!

*All gliders must circle **LEFT** within the area of **5km** from airport's base point.*

Look at other gliders.....





Club class task

AAT 128.12 - 270.76 km

Time: 02:30:00

024 Bojnice

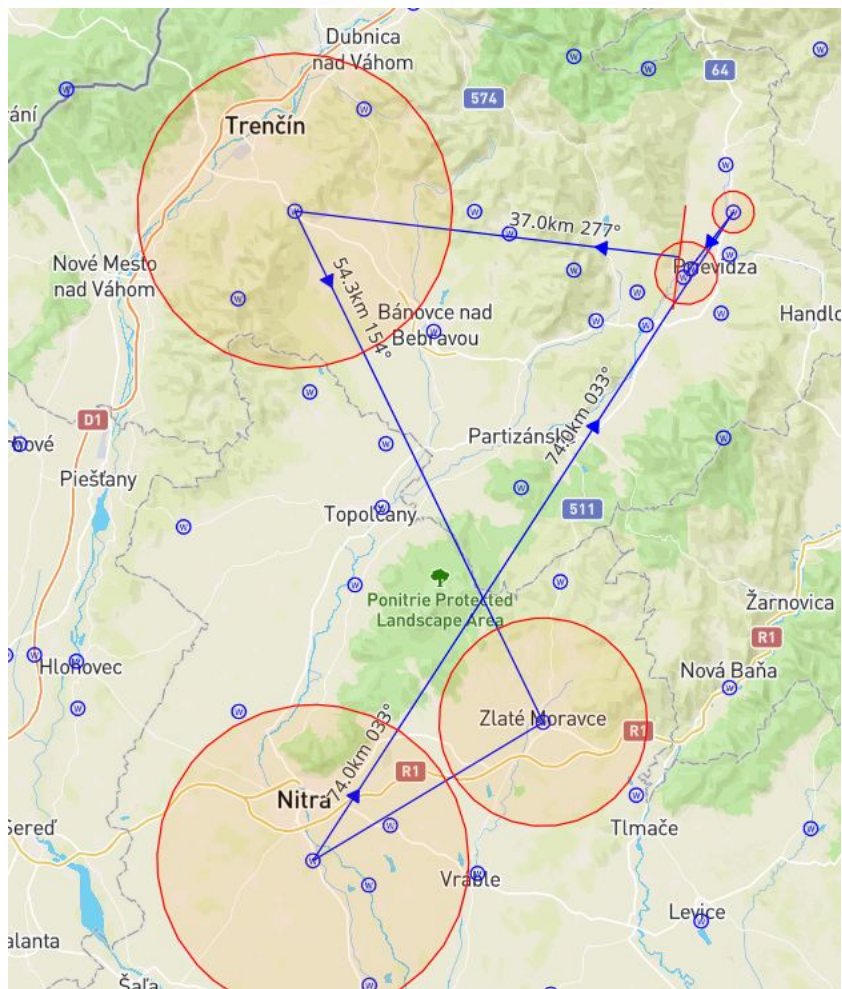
255 Radar

369 Zlaté Moravce

203 Nitra Plastika

197 Nedožery Brezany

247 Prievidza





15 m class task

AAT 157.14 - 307.02 km

Time: 02:30:00

051 Dolina

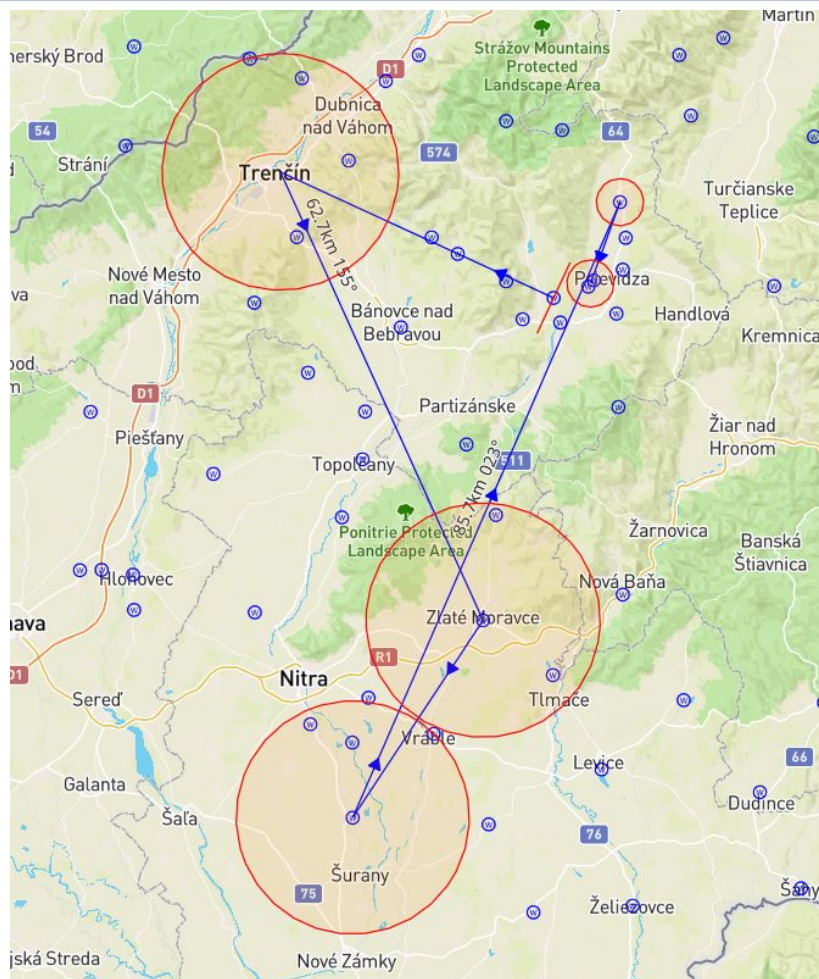
316 Trencin

369 Zlate Moravce

121 Komjatice

204 Nitranske Pravno

247 Prievidza





Combi class task

AAT 159.82 - 348.80 km

Time: 02:15:00

208 Novaky

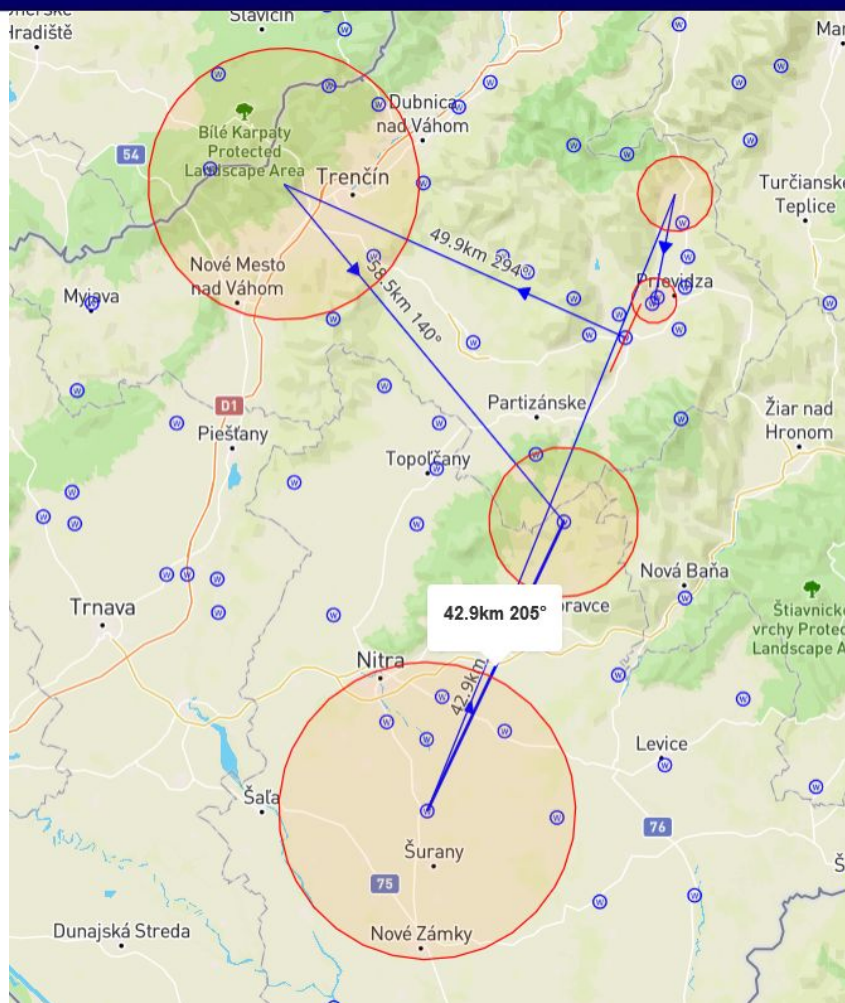
308 Tlsta Hora

284 Skycov

121 Komjatice

320 Tuzina

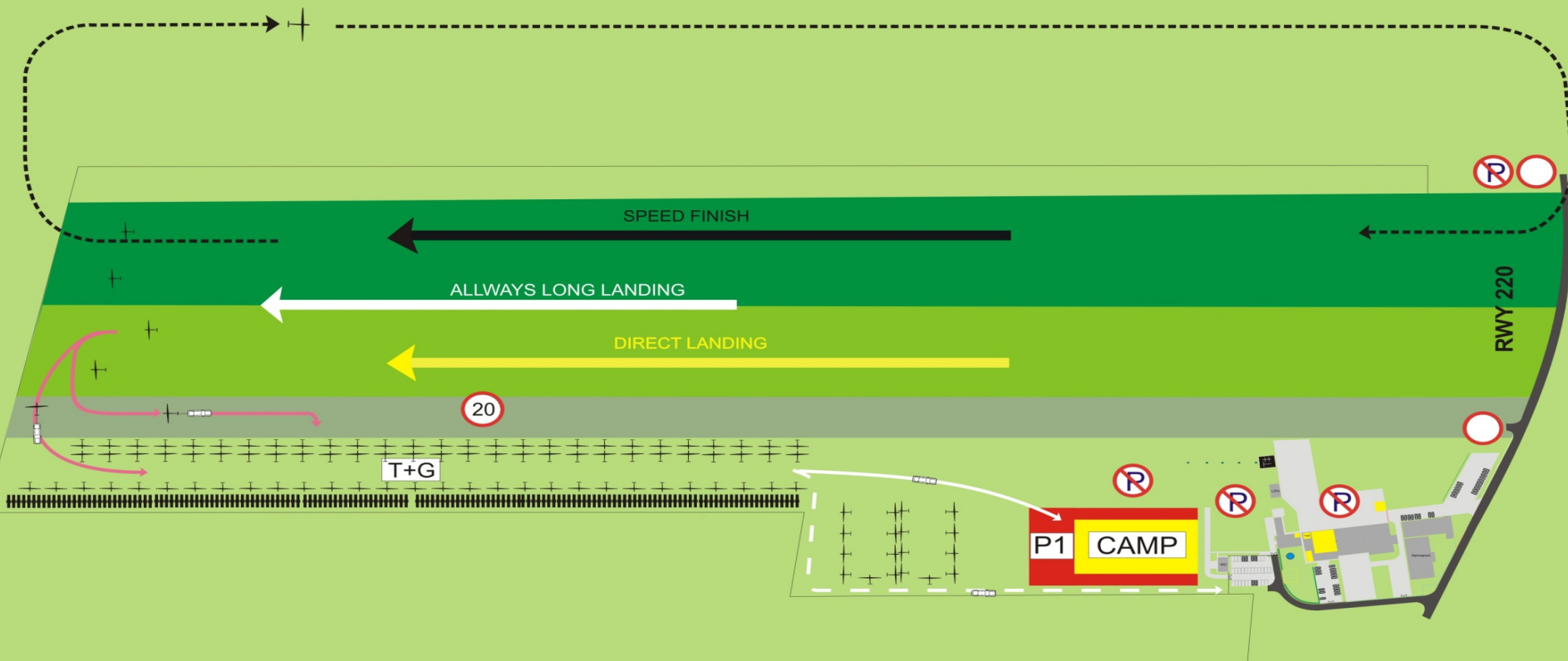
247 Prievdza



Arrivals

Arrivals 220 - approach from the north

Picture 4b.





Notices

MAX. ALTITUDE: 8000 ft (2438 m MSL)

Except Orava, Fatra, Chopok 9500 ft (2895 m MSL) and under TMA 4 Poprad FL100

PERMANENTLY PROHIBITED AREAS: OUTCARE, LZP1_MOCHOVCE, TMA Sliac, CTR Sliac, LZR225A, LZR225B, LZTRA 65, CTR Poprad, TMA 1,2,3,4 Poprad, TMA 4 Bratislava

PROHIBITED AREA FOR TODAY: Nil

Danger area: LZD1 Sklene

Warning drop zone: None

Outlanding: call +421 908 706 340





Fly safely!

