



FCC Gliding 2020

Task briefing 1

2nd August 2020



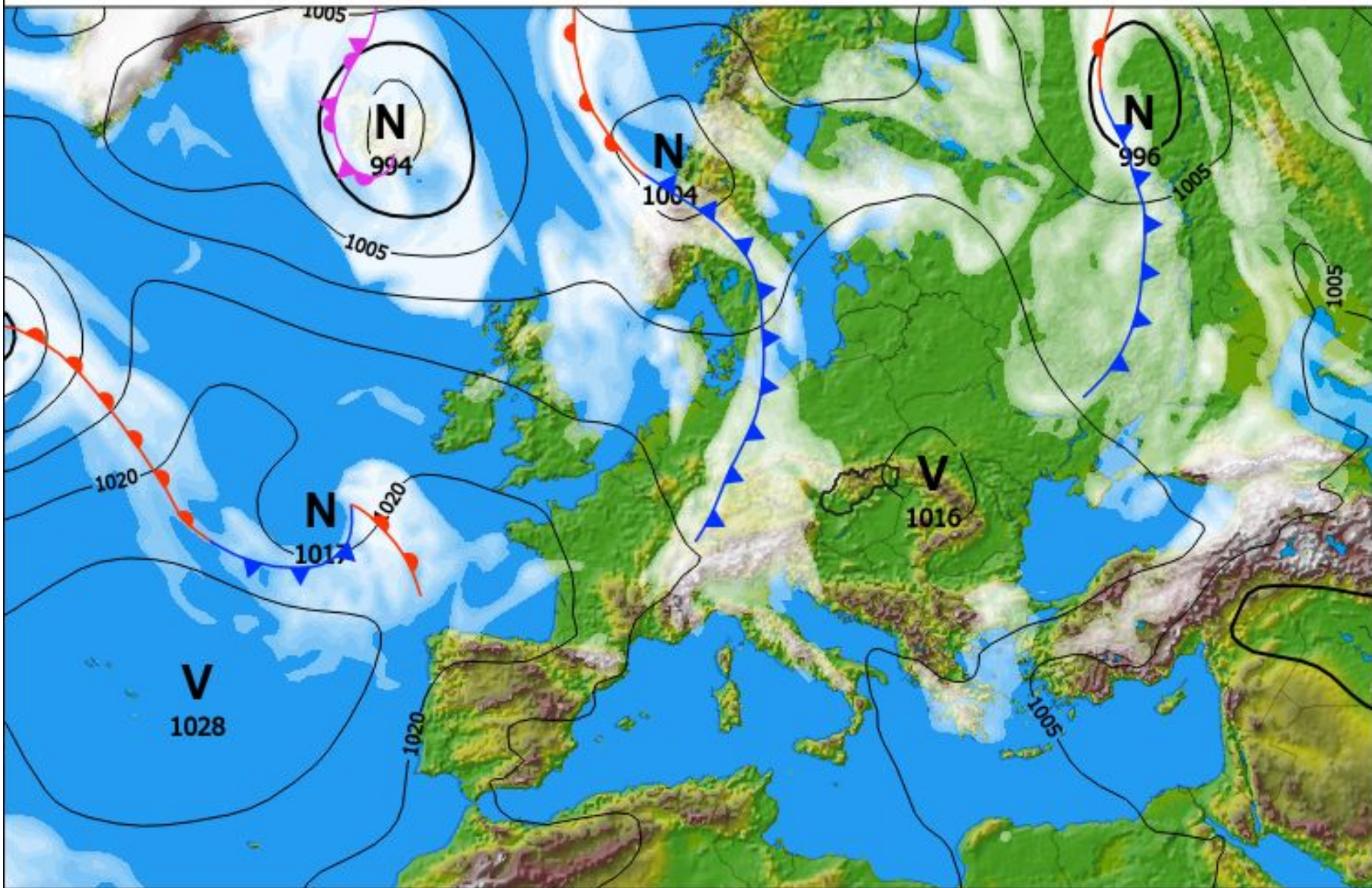


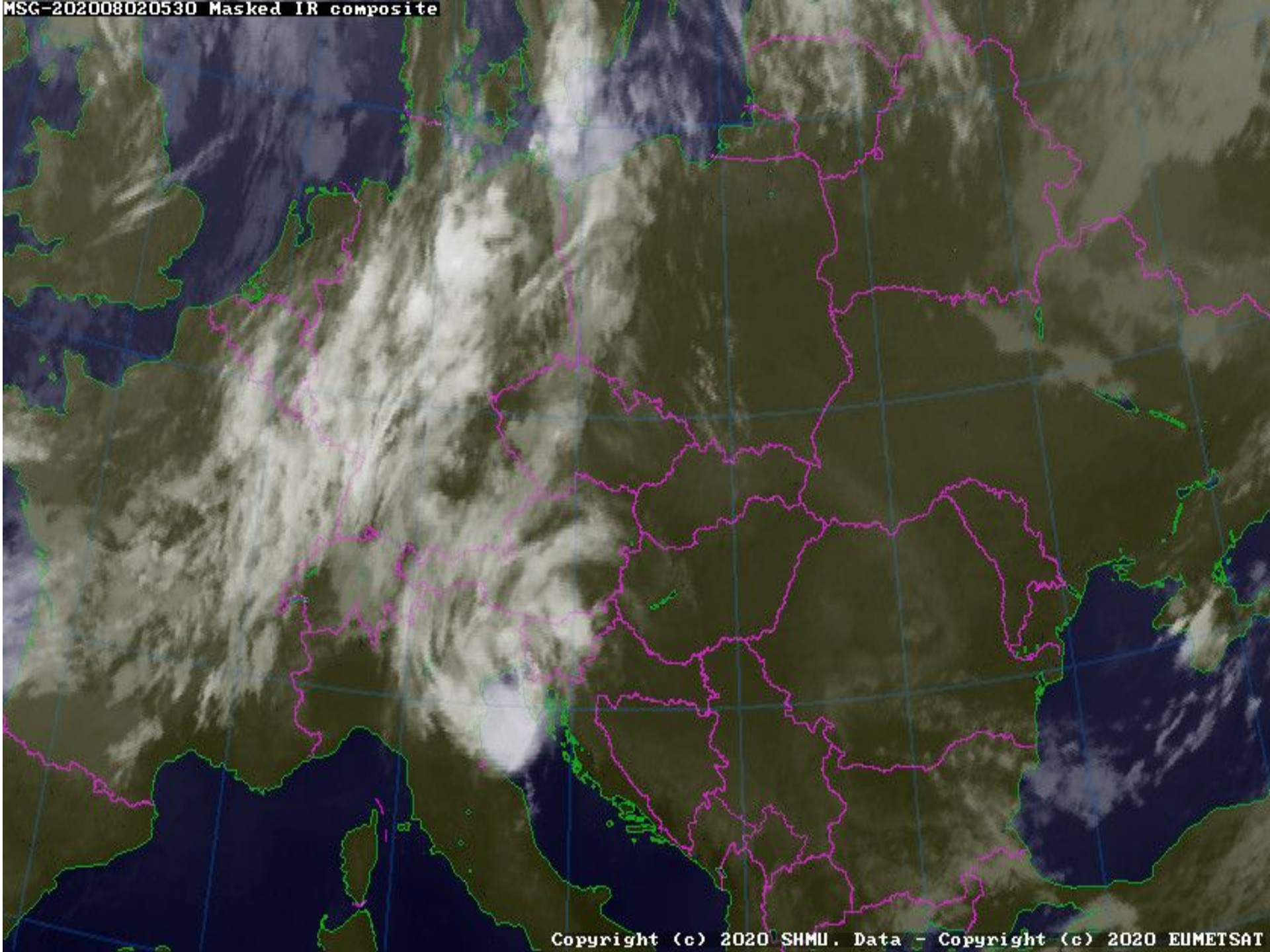
Weather

Weather report



© SHMÚ - Prízemné tlakové pole - nedeľa 02.08.2020 12:00 UTC

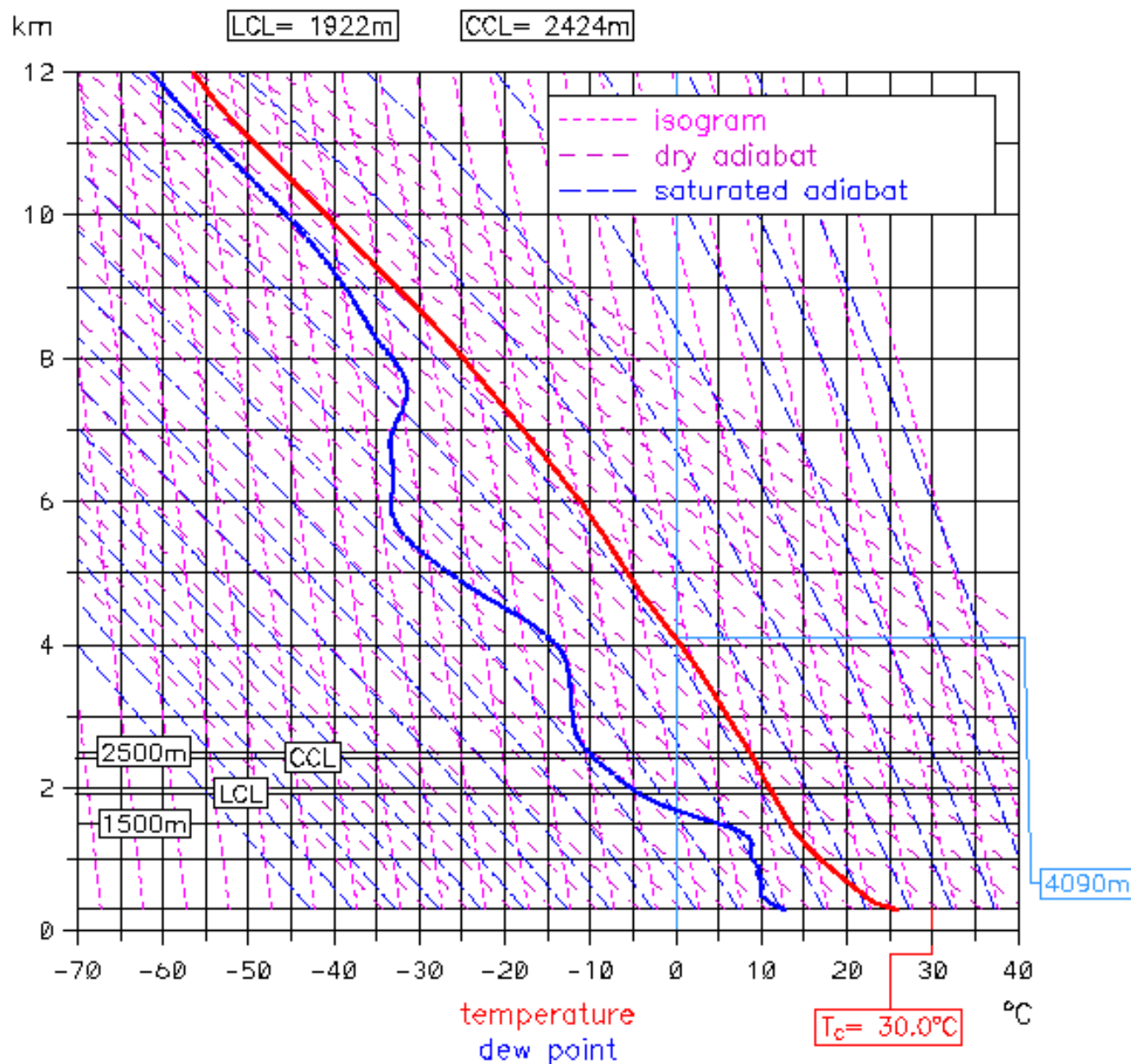




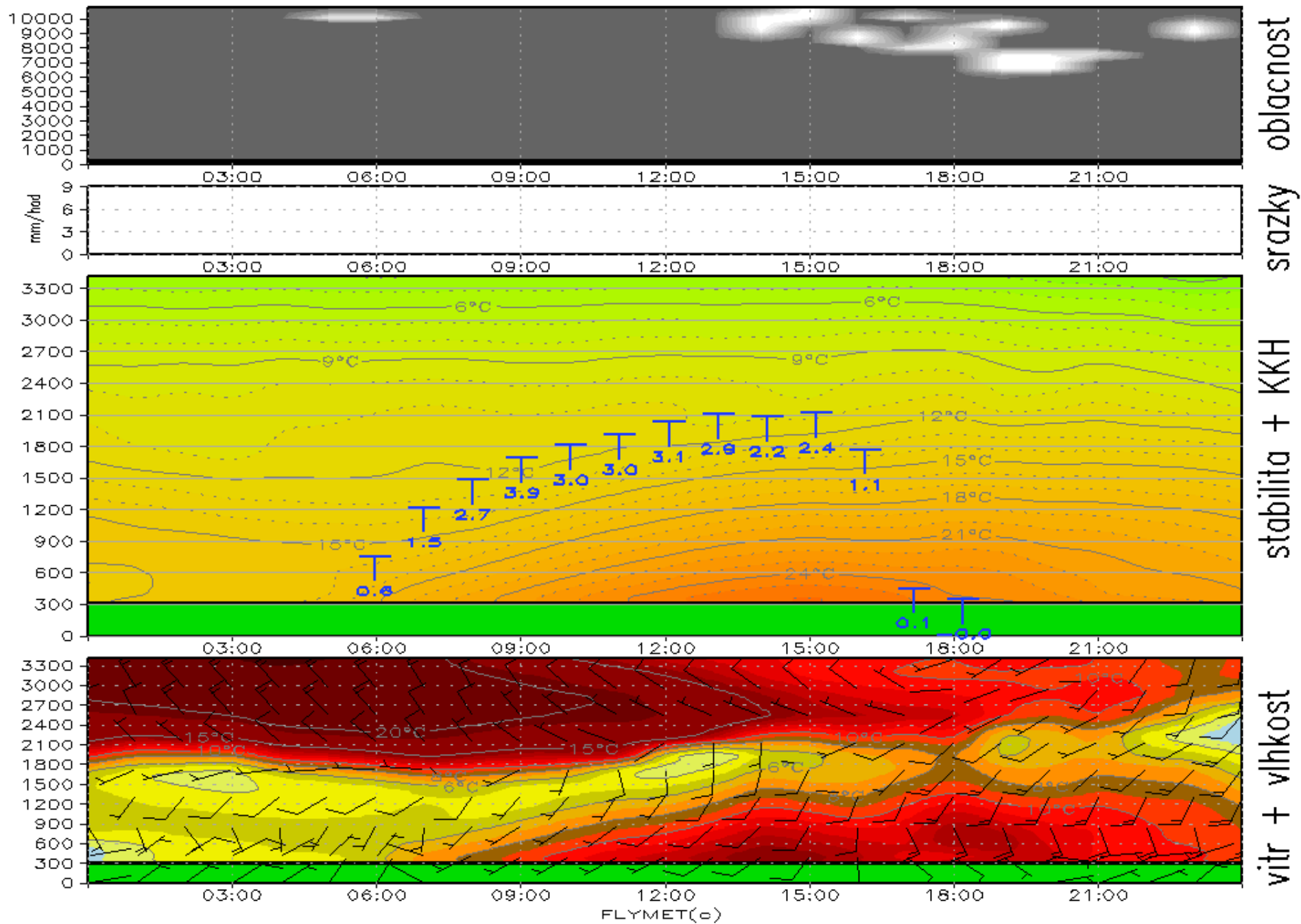
Prievidza
ALADIN forecast

+12

start: Sun 02-08-2020 00 UTC
valid: Sun 02-08-2020 12 UTC



Meteogram PŘEVIDZA na nedeli 02.08.2020

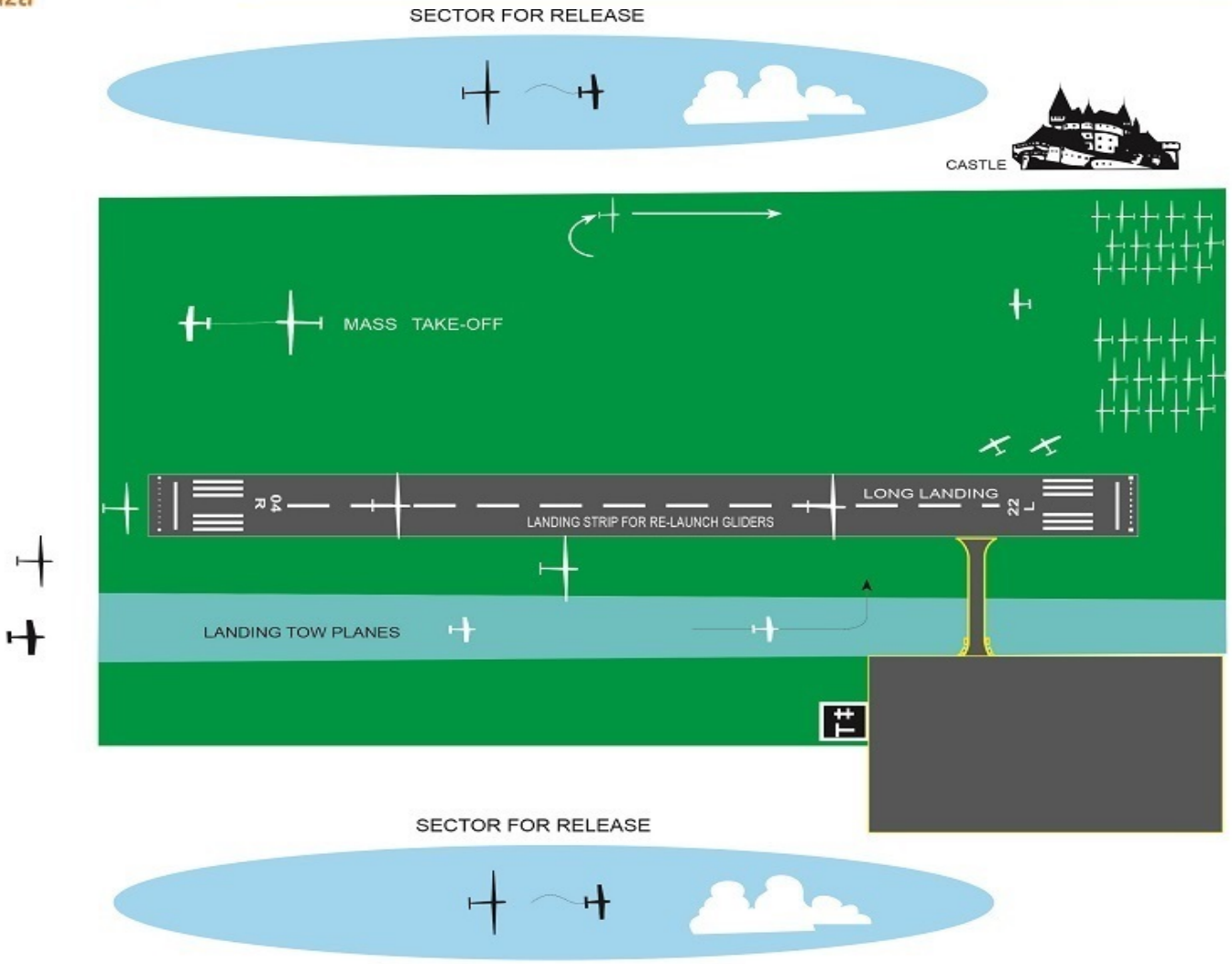


Safety briefing

A. Take-off from the runway 22

Alternative A – Southern wind up to 10kt

A



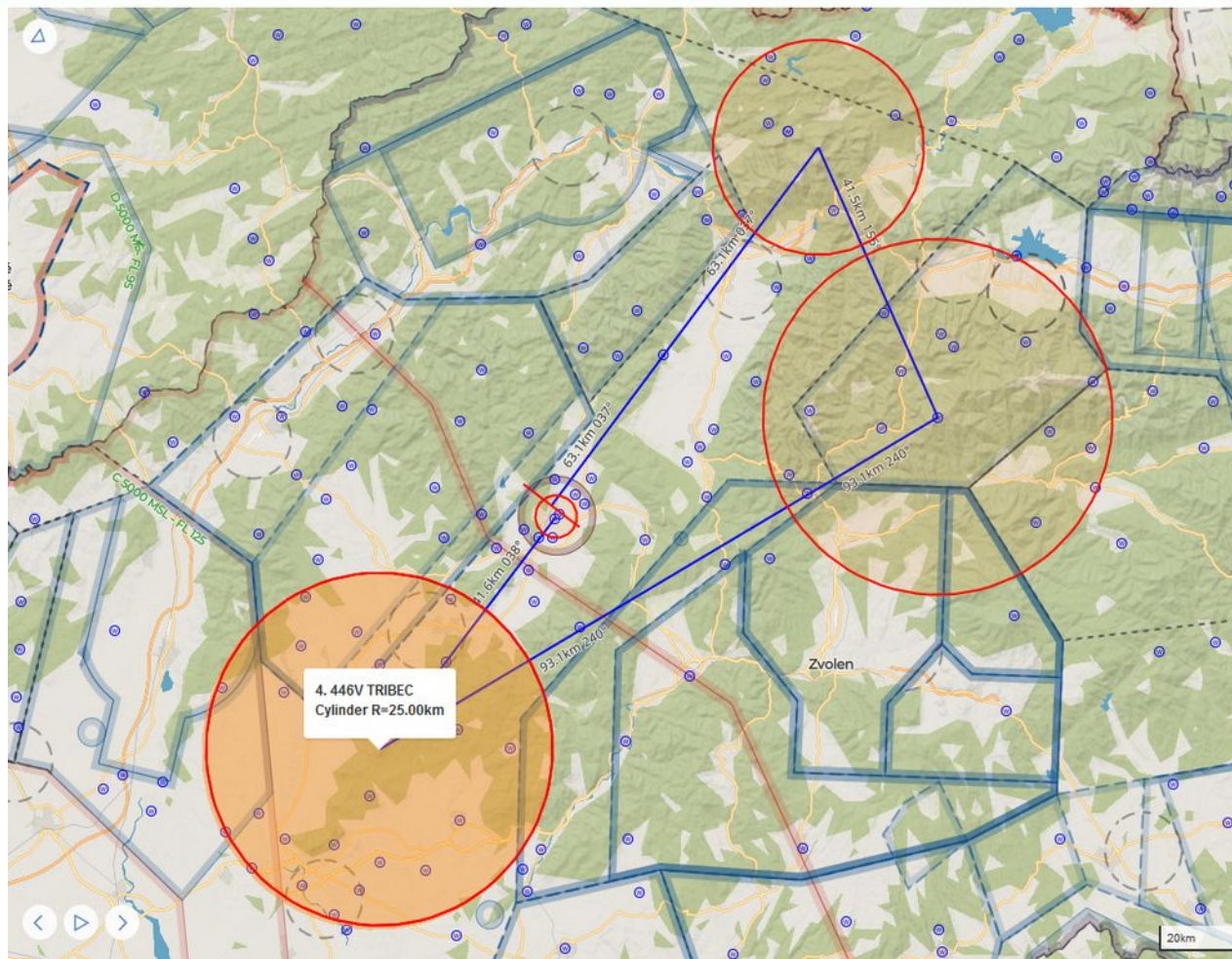
RWY 22

LAUNCHING
AND AIR TOW
PROCEDURES
FOR RUNWAY
22
Landing for Re-Launch
04

Club class task

AAT 138,2 – 349,8 km
Time: 03:00:00

001 BOJNICE
365 ROZSUTEC
134 CHOCHULA
446 V TRIBEC
001 PRIEVIDZA





Combi class task

AAT 163,13 – 410,41 km

Time: 03:00:00

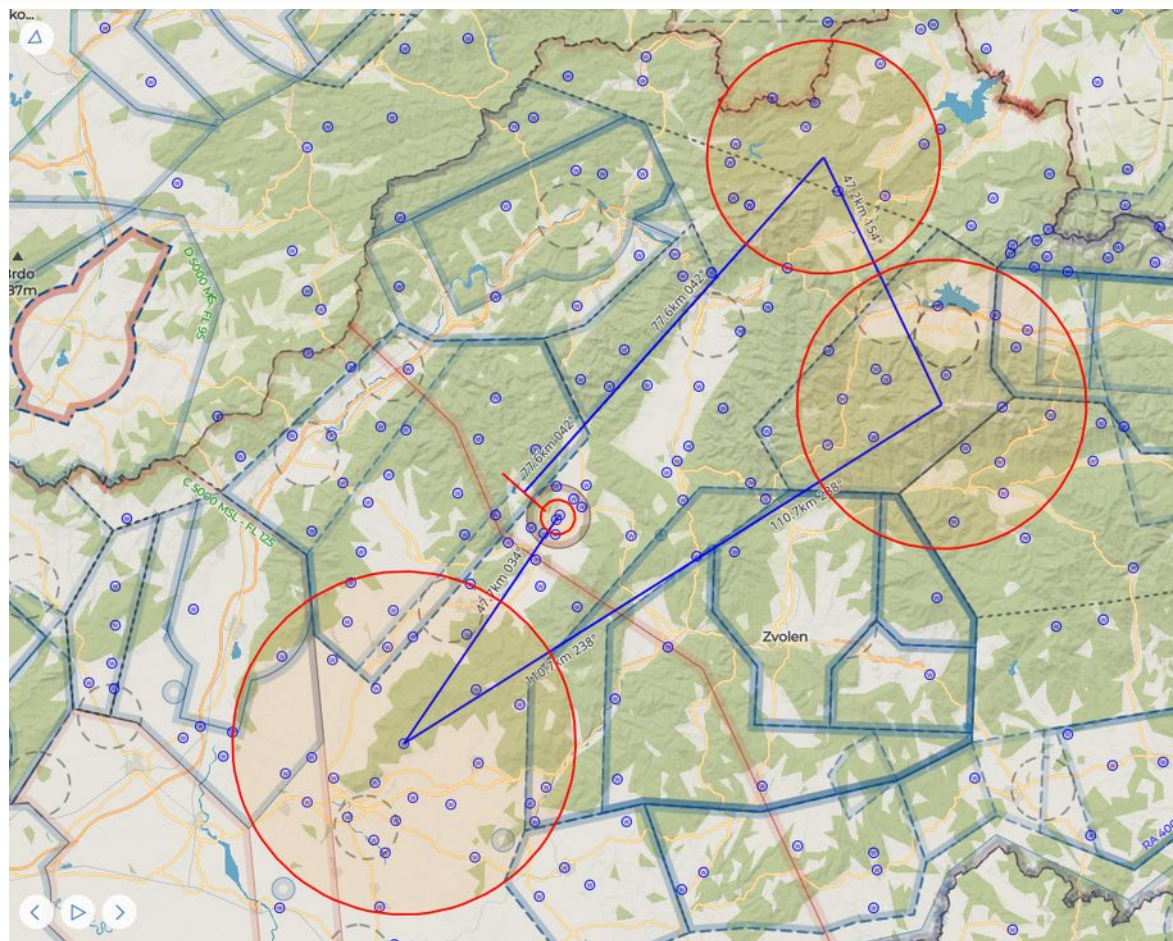
069 DLZIN

323 PARAC

131 CHABENEC

102 GYMES

001 PRIEVIDZA

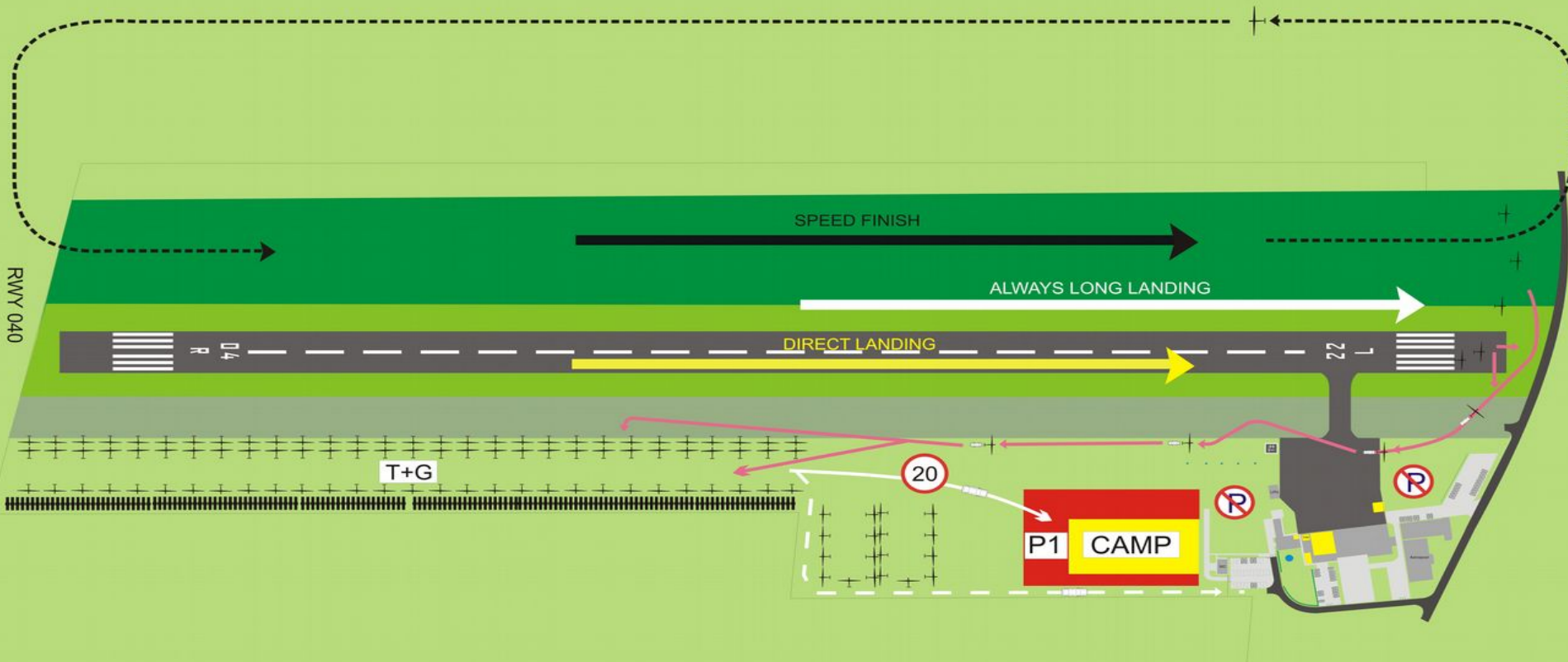


Safety briefing

RWY04 Arrivals APP from S

Arrivals 040 - approach from the south

Picture 4a.





Safety briefing

Finish ring

*Minimal altitude on finish ring is 310m AMSL
(today)*





Notices

MAX. ALTITUDE: 8000 ft (2438 m MSL)

Except GLDA Beskydy, Liptov, Chopok - 9500 AMSL. Under TMA 4 Poprad 10000 AMSL. Czech Republic FL095 (except controlled areas).

PERMANENTLY PROHIBITED AREAS: SVK: LZP1 MOCHOVCE, LZP29 Jaslovské Bohunice, LZP23 Sala, TMA 1, 2, 3 Sliac, CTR Sliac, CTR Tatry, TMA 1,2,3 Poprad, TMA 1, 2, 4 Bratislava, LZR10 RUTOL: CZ: LKP13 Vrbetice

PROHIBITED AREA FOR TODAY: Nil

Warning drop zone: LZDB since 10:30UTC

Outlanding: text message: +421 908 706 340





Take off

12:00





Fly safely!

