



# ***FCC Gliding 2020***

## ***Task briefing 5***

***6<sup>th</sup> August 2020***



## *Life class*

**1. Ján Hrnčířik 70yrs**

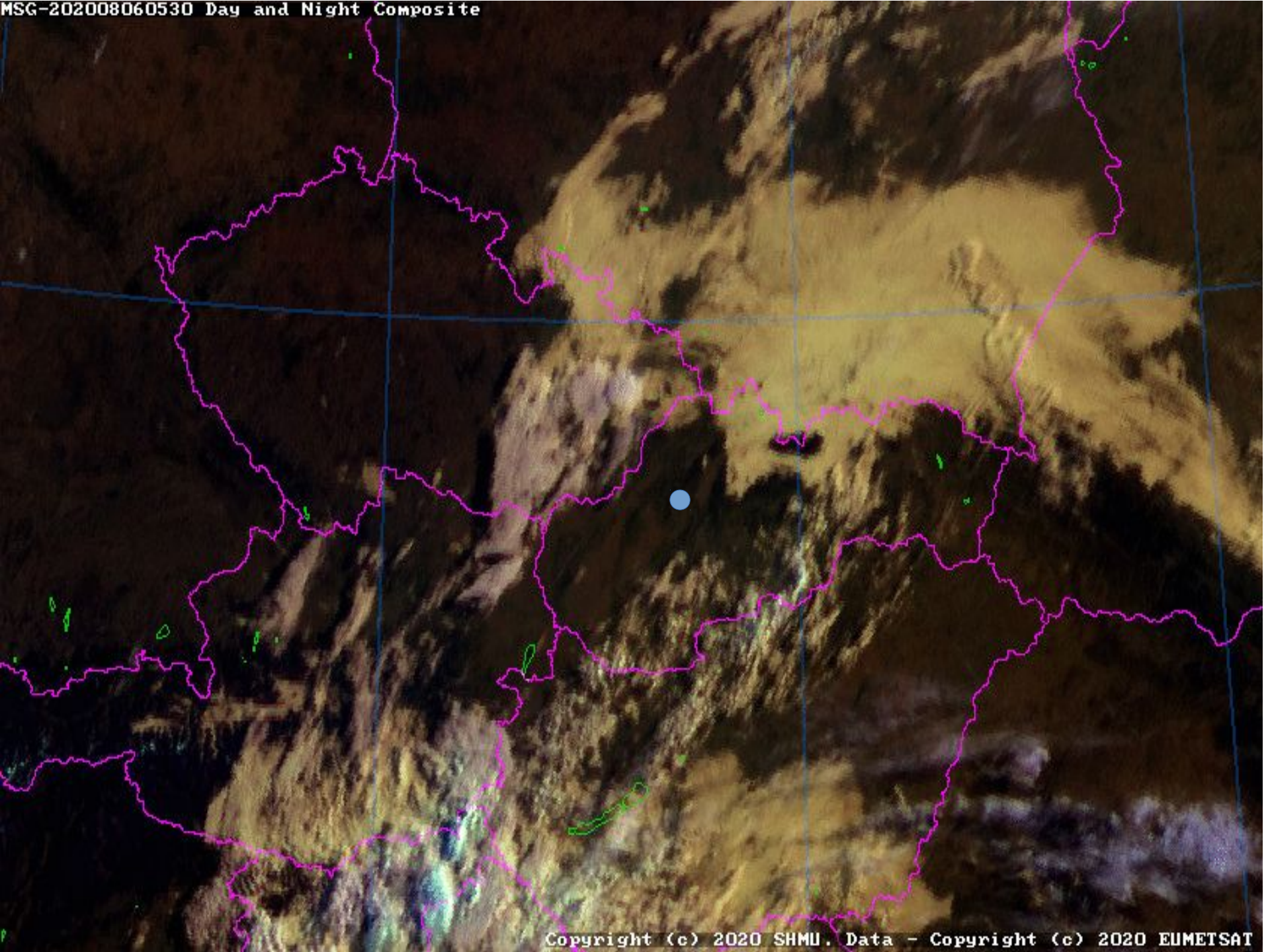




# *Weather*

## *Weather report*





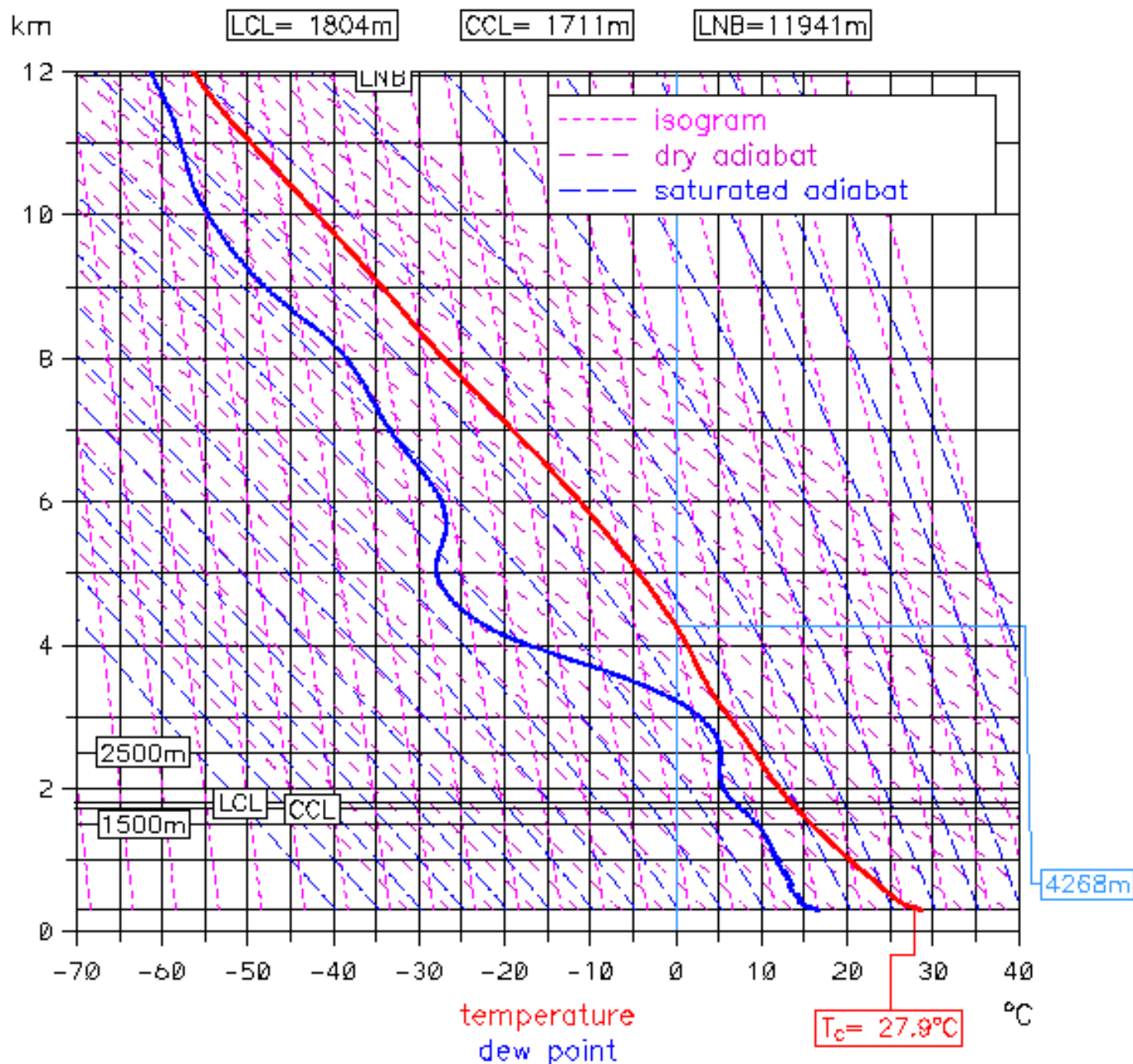
Prievizda

ALADIN forecast

+12

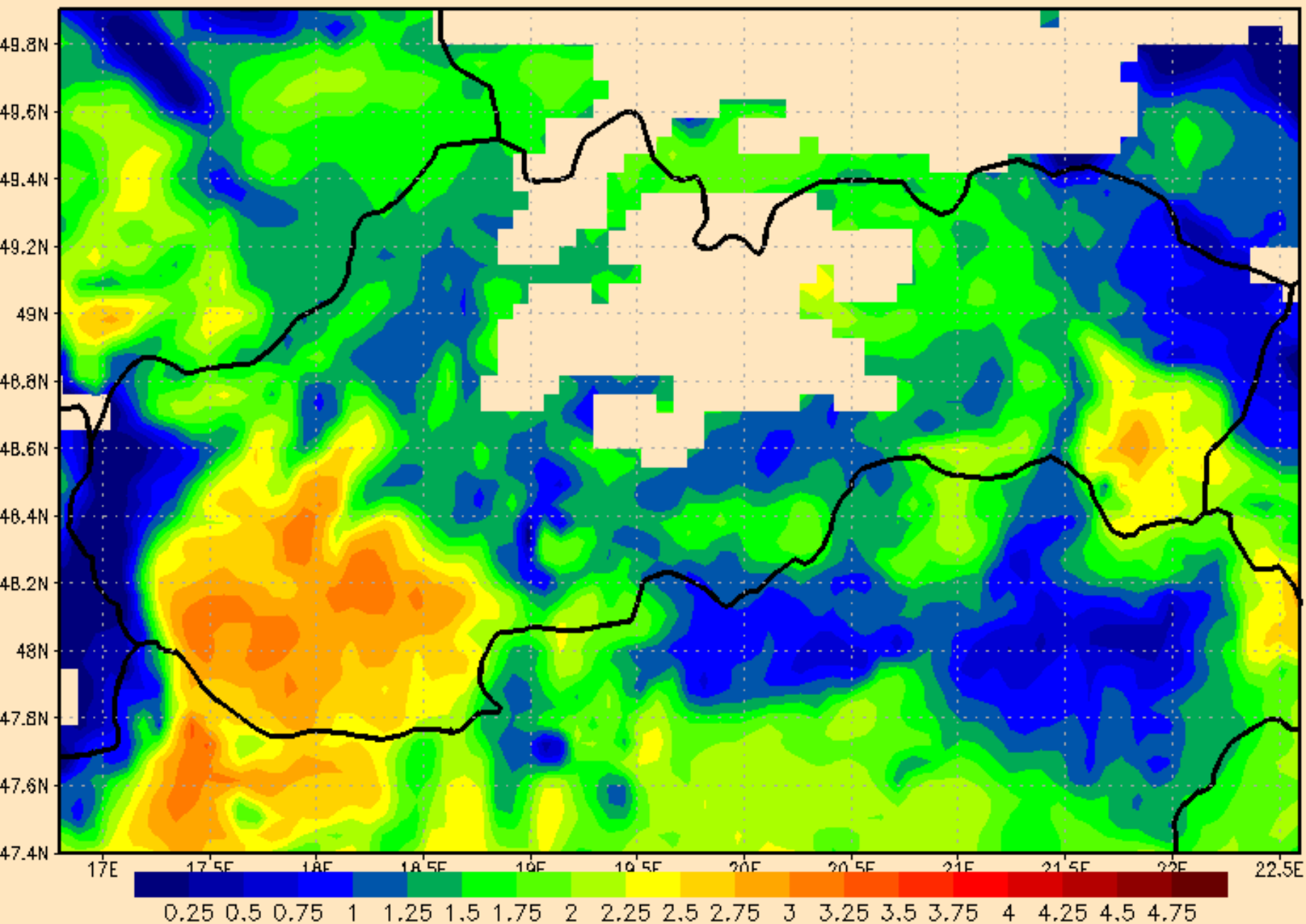
start: Thu 06-08-2020 00 UTC

valid: Thu 06-08-2020 12 UTC



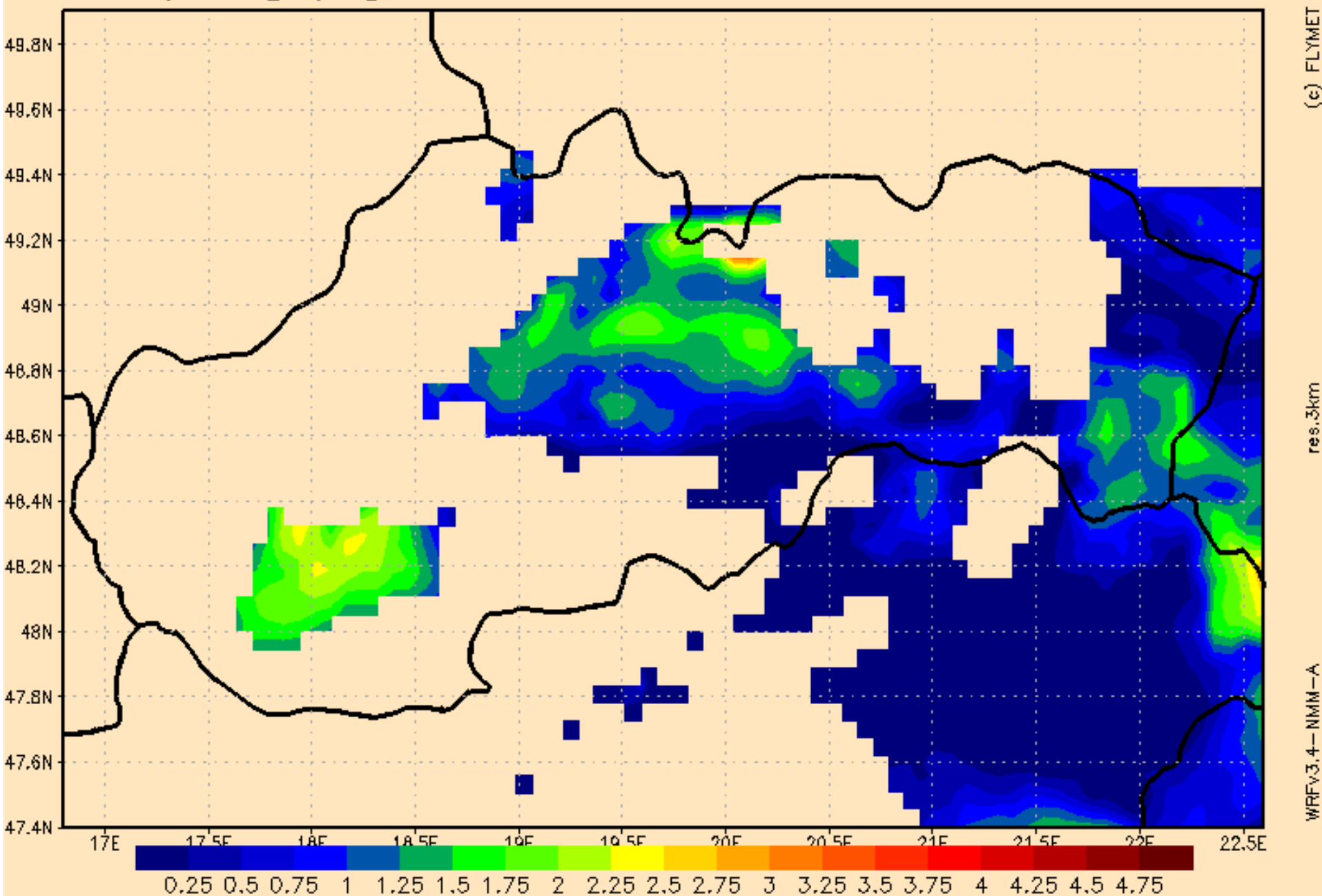
stoupani [m/s] 1000m MSL

ctvrtek 06.08.2020 09 UTC

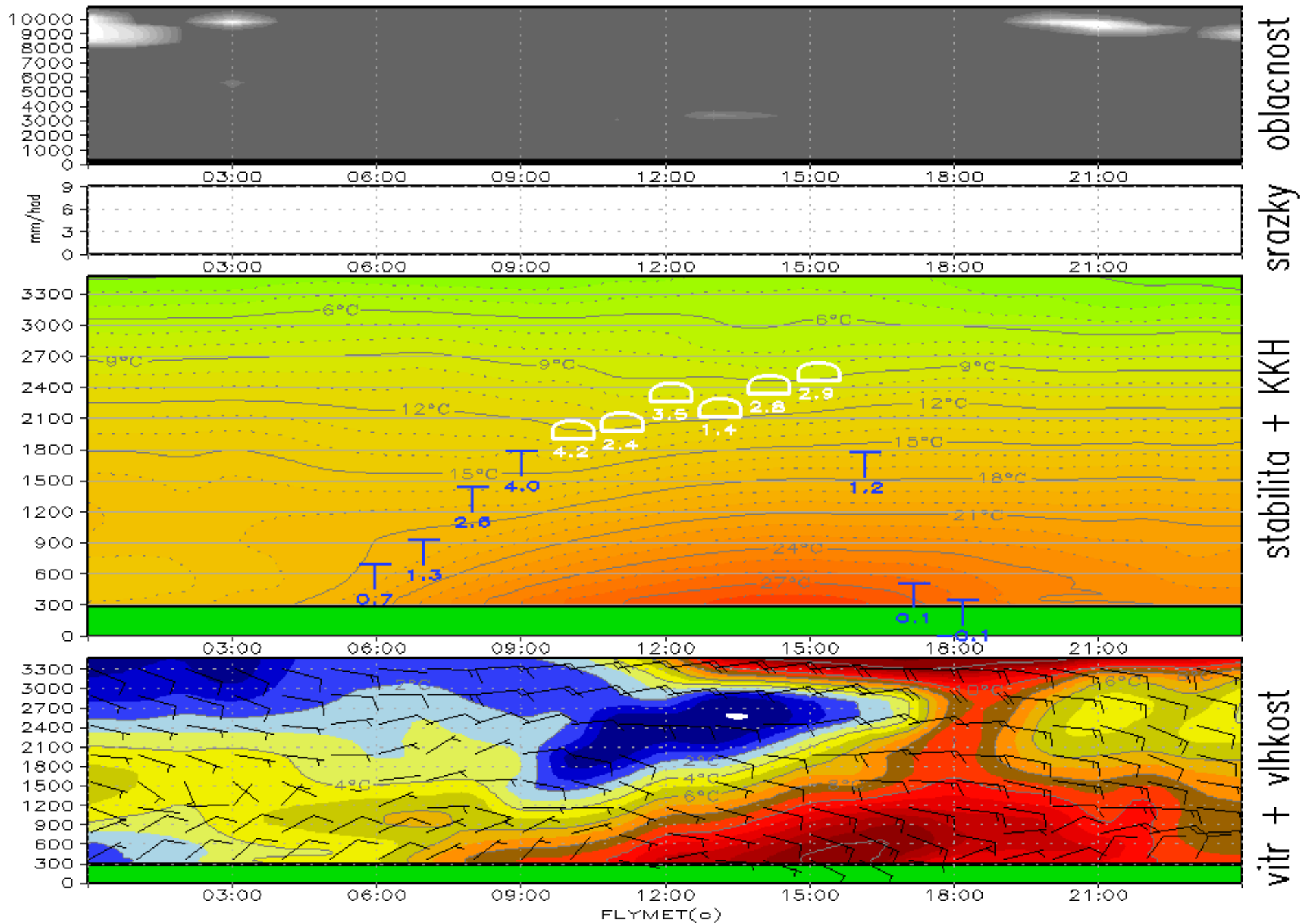


stoupani [m/s] 1500m MSL

ctvrtek 06.08.2020 09 UTC



# Meteogram PŘÍEVIDZA na čtvrtek 06.08.2020

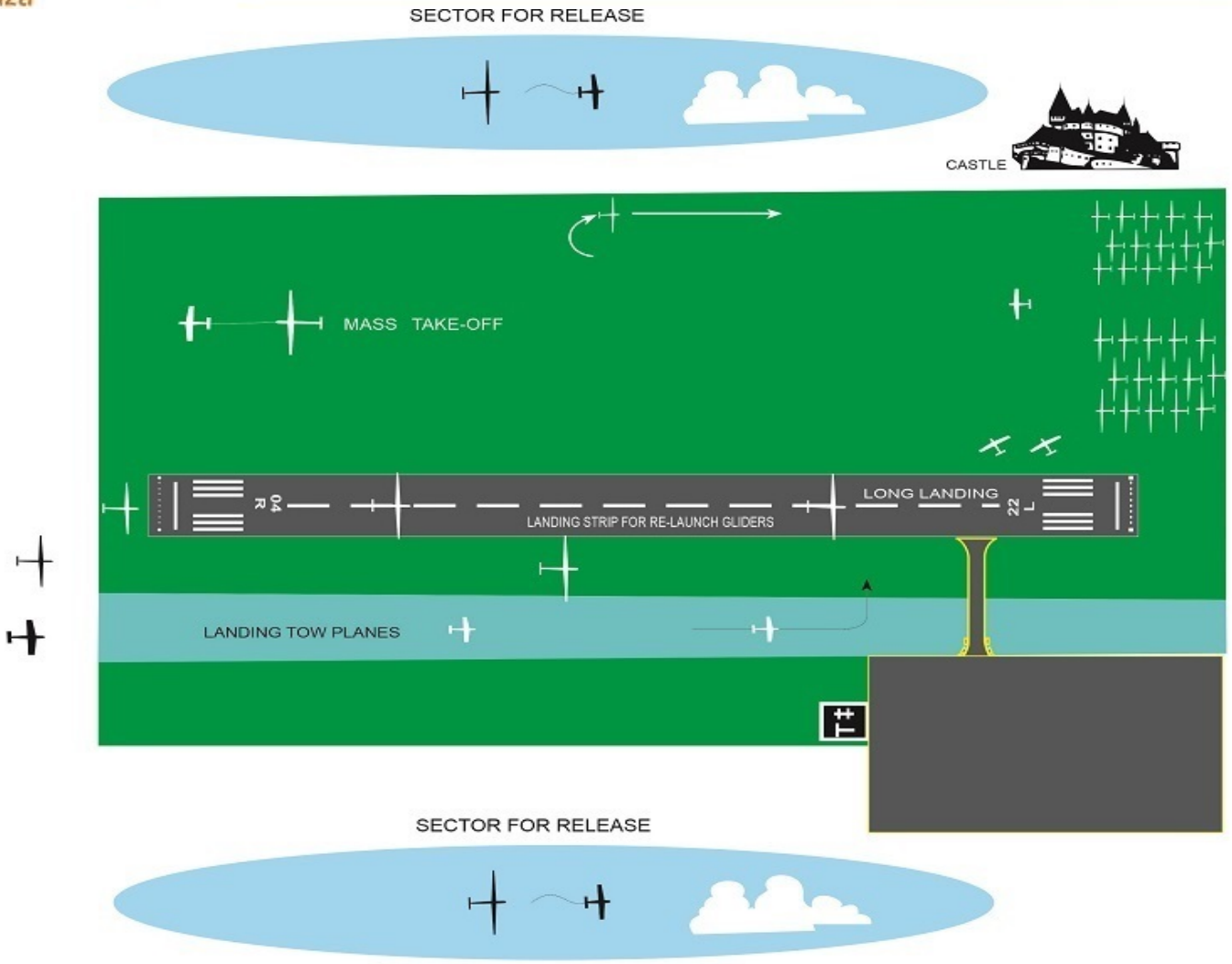




# Safety briefing

## A. Take-off from the runway 22 Alternative A – Southern wind up to 10kt

# A



RWY 22

LAUNCHING  
AND AIR TOW  
PROCEDURES  
FOR RUNWAY  
**22**  
Landing for Re-Launch  
**04**



# Club class task

Racing 315,24km

001 BOJNICE

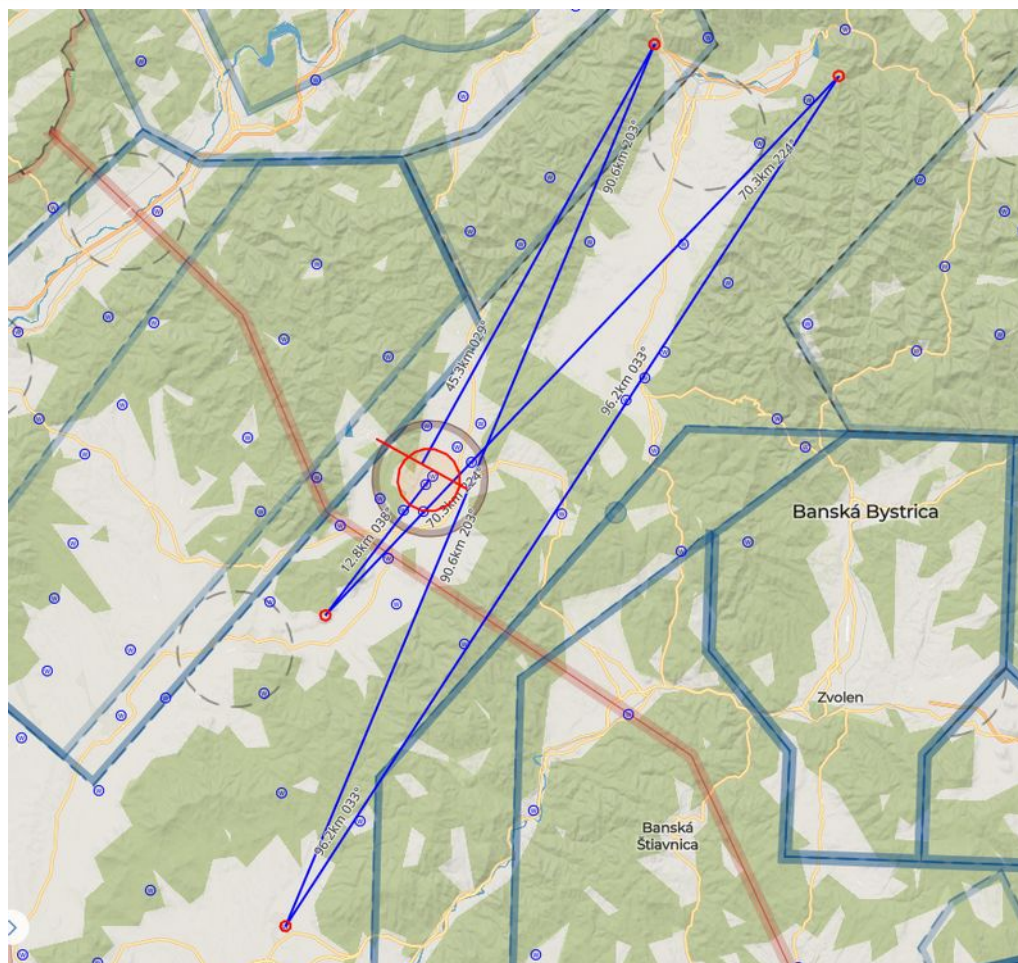
082 DUBNA SKALA

490 ZLATE MORAVCE

234 LUBOCHNIANSKE

449 V VRCHPARTIZ

006 PRIEVIDZA





# Combi class task

Racing 405,37km

069 DLZIN

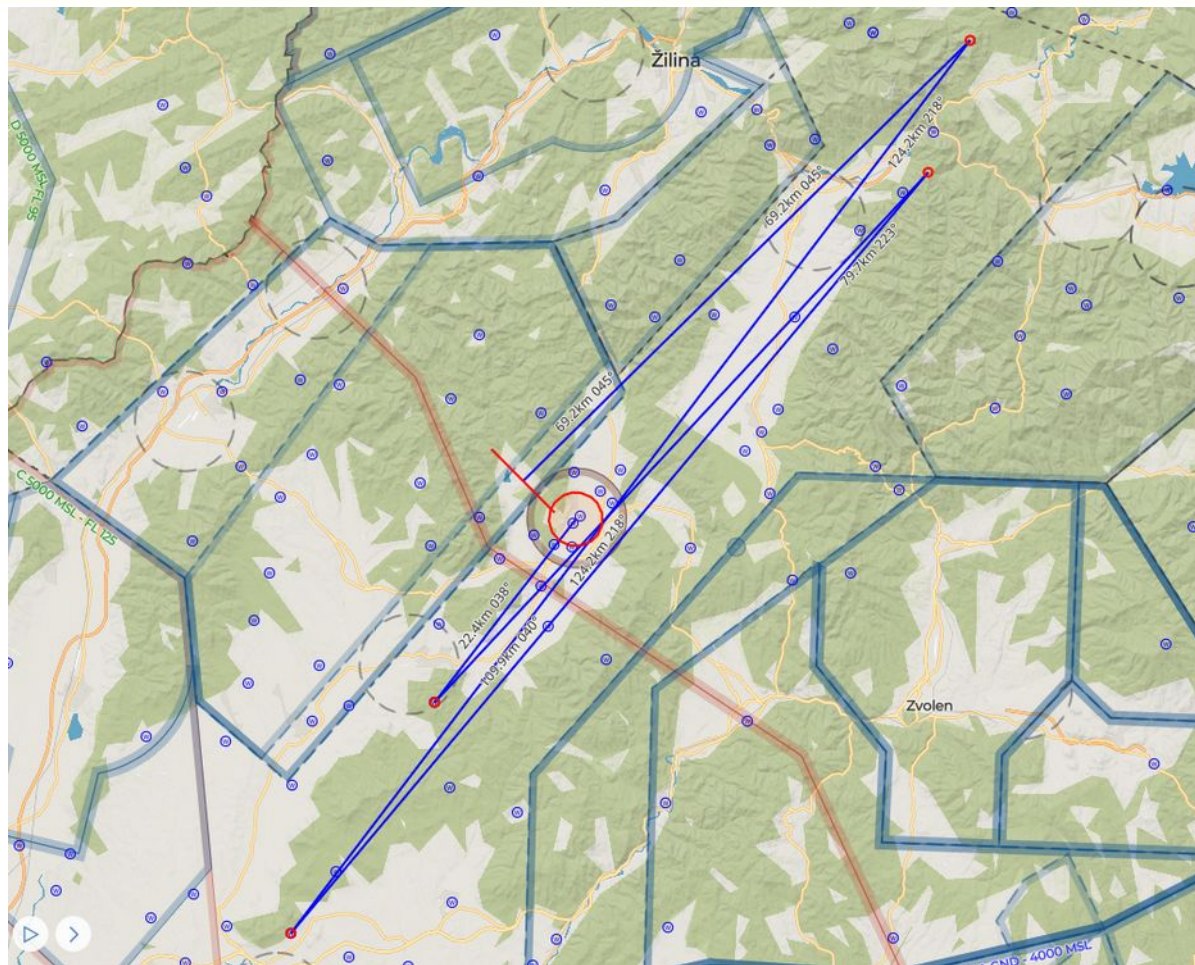
121 HRKOVA KECKA

397 STITARE

234 LUBOCHNIANSKE

454 VELKY KLIZ

006 PRIEVIDZA





# Notices

**MAX. ALTITUDE:** 8000 ft (2438 m MSL)

**INCLUDING GLDA Martinky EXCEPT: GLDA Beskydy, Liptov, Chopok - 9500 AMSL. Under TMA 4 Poprad 10000 AMSL. Czech Republic FL095 (except controlled areas). Poland FL095 (except controlled areas).**

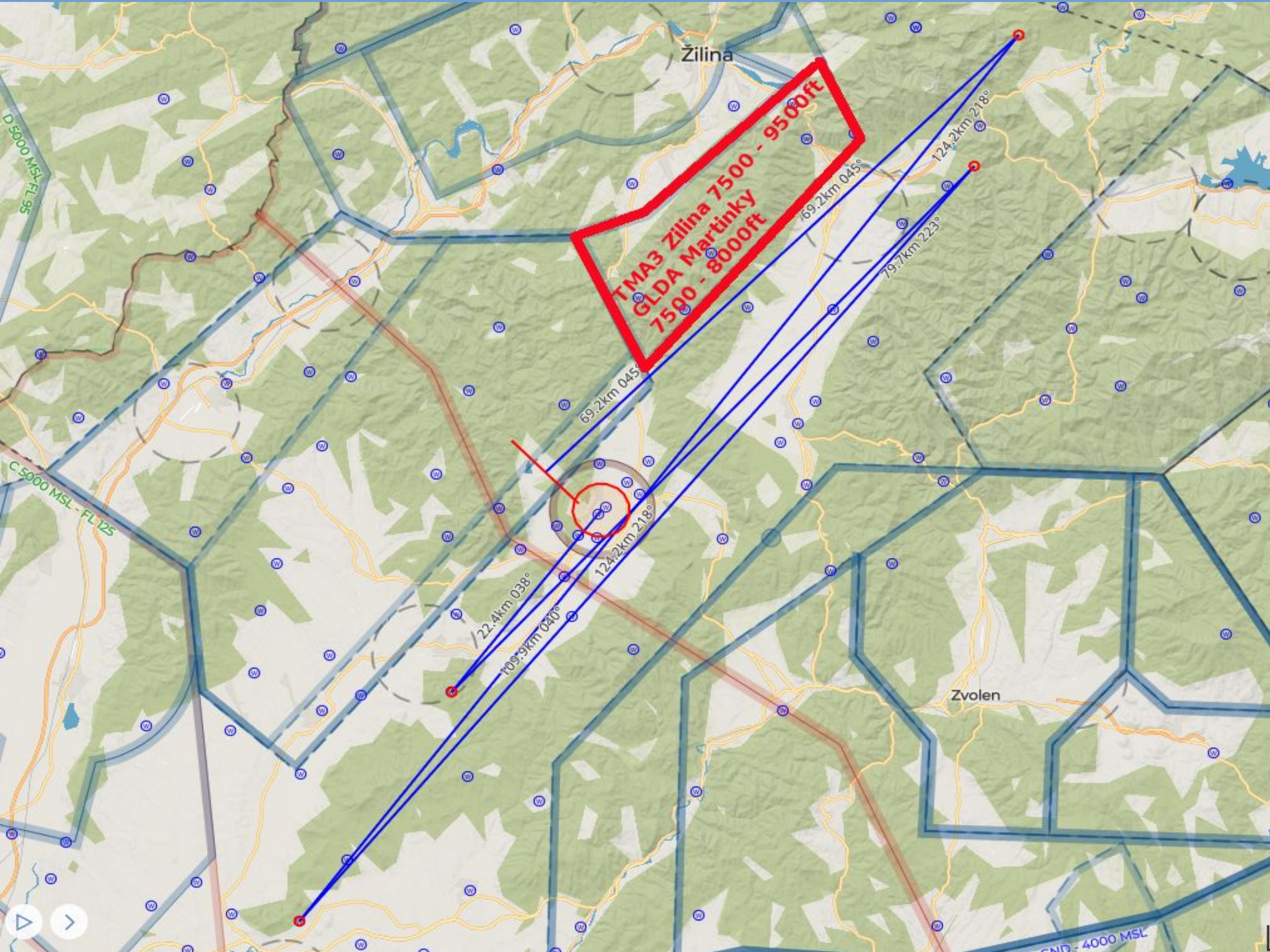
**PERMANENTLY PROHIBITED AREAS:** SVK: LZP1 MOCHOVCE, LZP29 Jaslovské Bohunice, LZP23 Sala, TMA 1, 2, 3, 4 Sliac, CTR Sliac, CTR Tatry, TMA 1,2,3,4 Poprad, TMA 1, 2, 4 Bratislava, LZR10:

**PROHIBITED AREA FOR TODAY:** LZR60A,60B,60C; LZTRA06A,06B,06C CTR Piestany, TMA 1, 2 Piestany, CTR Zilina, TMA 1,2,3 Zilina without GLDA Martinky

**Warning drop zone:** Nil

**Outlanding:** text message: +421 908 706 340



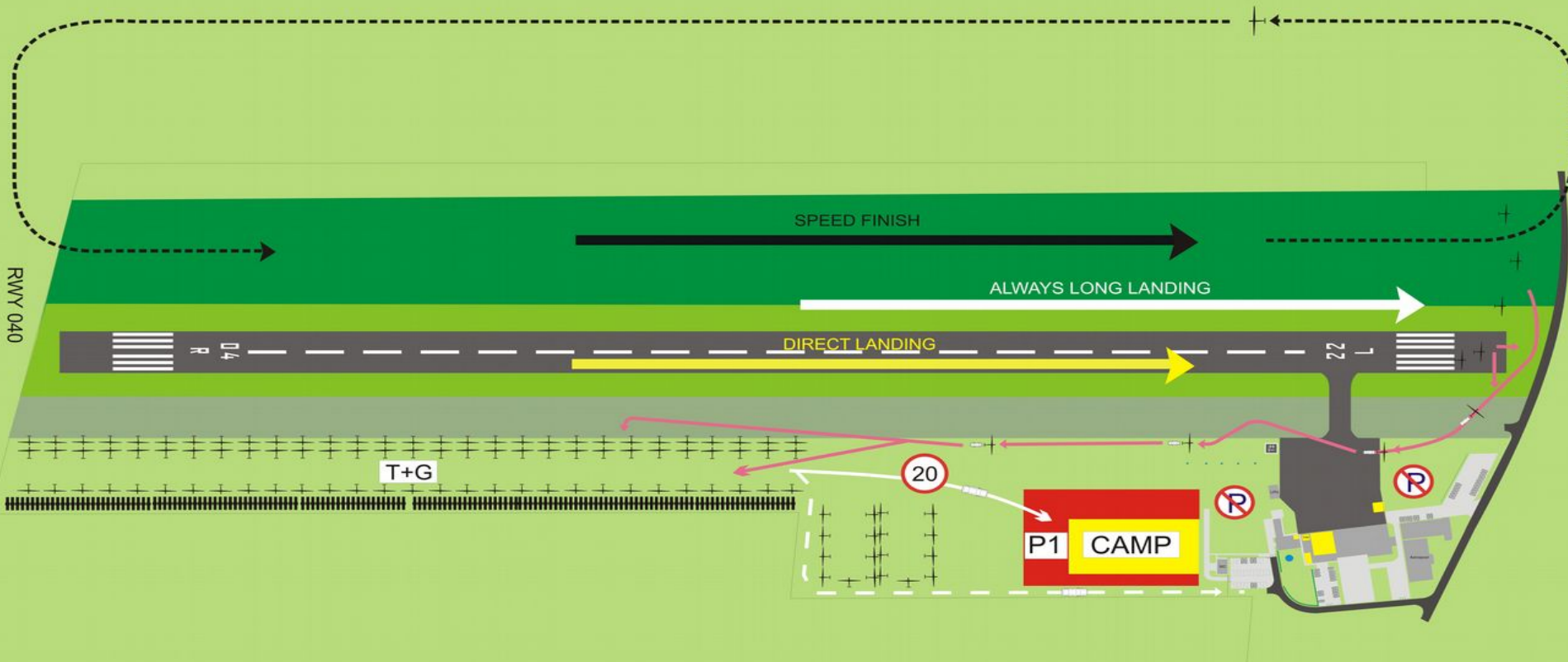


# Safety briefing

## RWY04 Arrivals APP from S

Arrivals 040 - approach from the south

Picture 4a.





# *Safety briefing*

## *Finish ring*

*Minimal altitude on finish ring is 310m AMSL*





# Take off

11:00







***Fly safely!***

