



FCC Gliding 2020

Task briefing 2

2nd August 2021

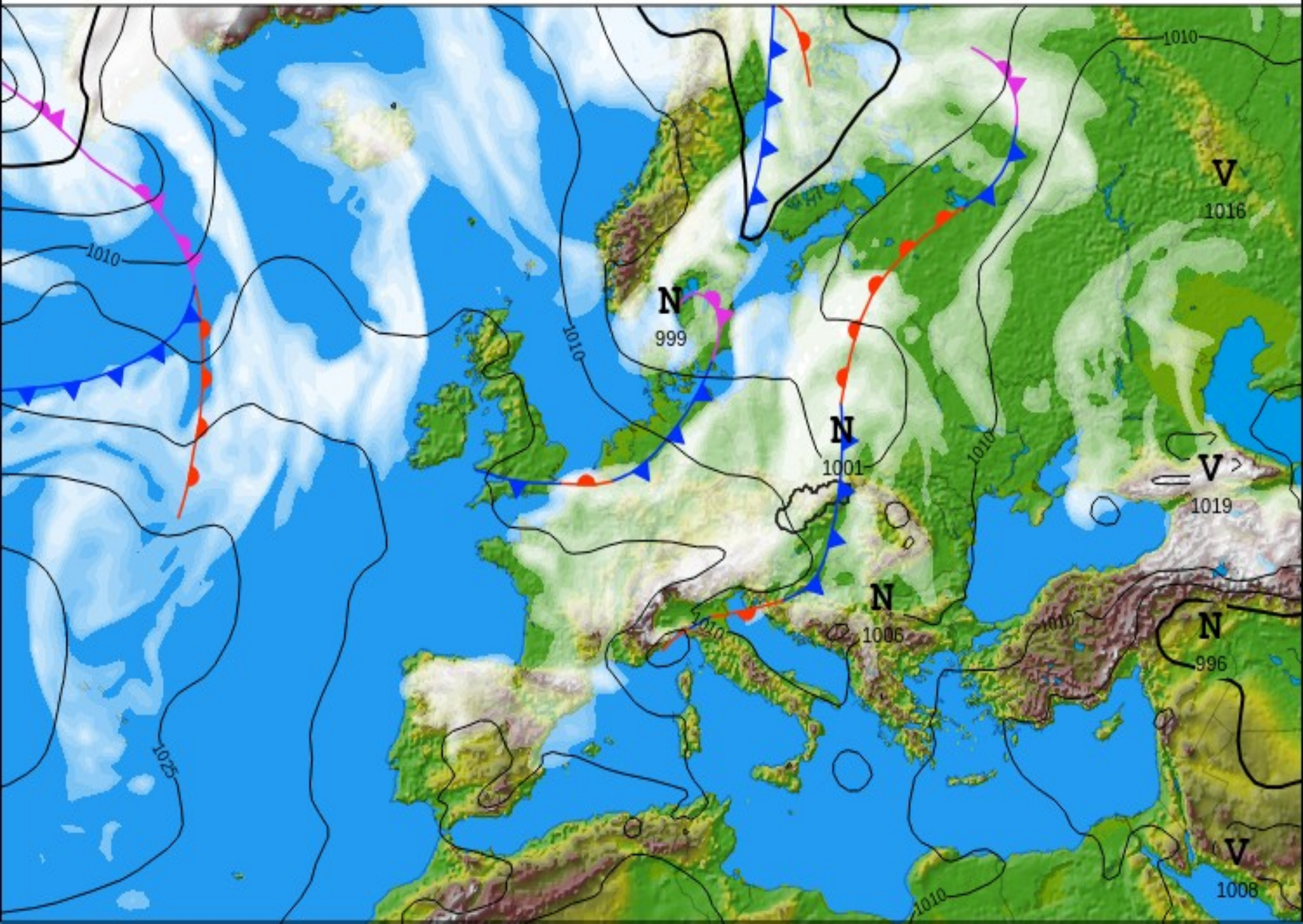




Weather

Weather report





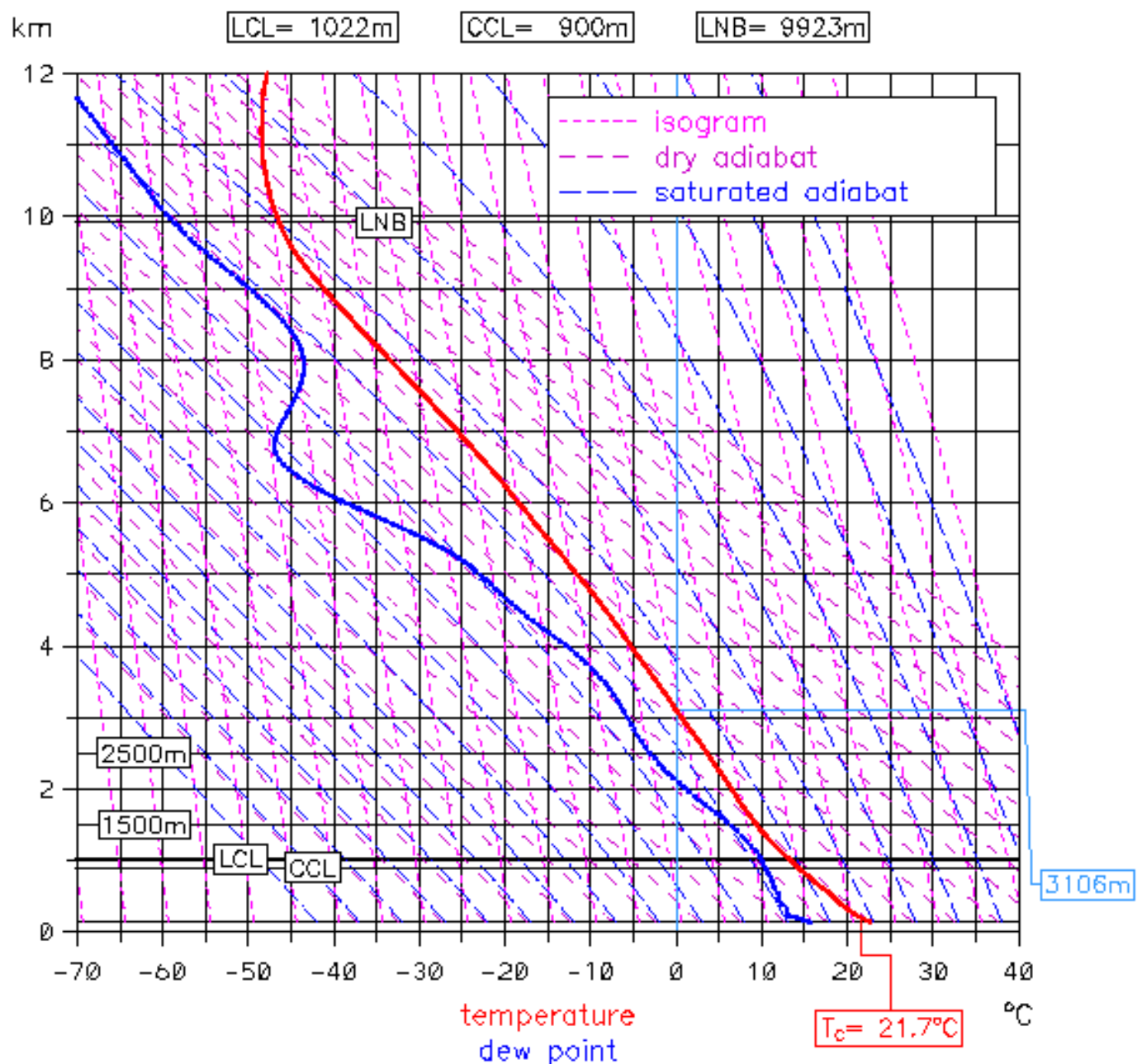
Nitra

ALADIN forecast

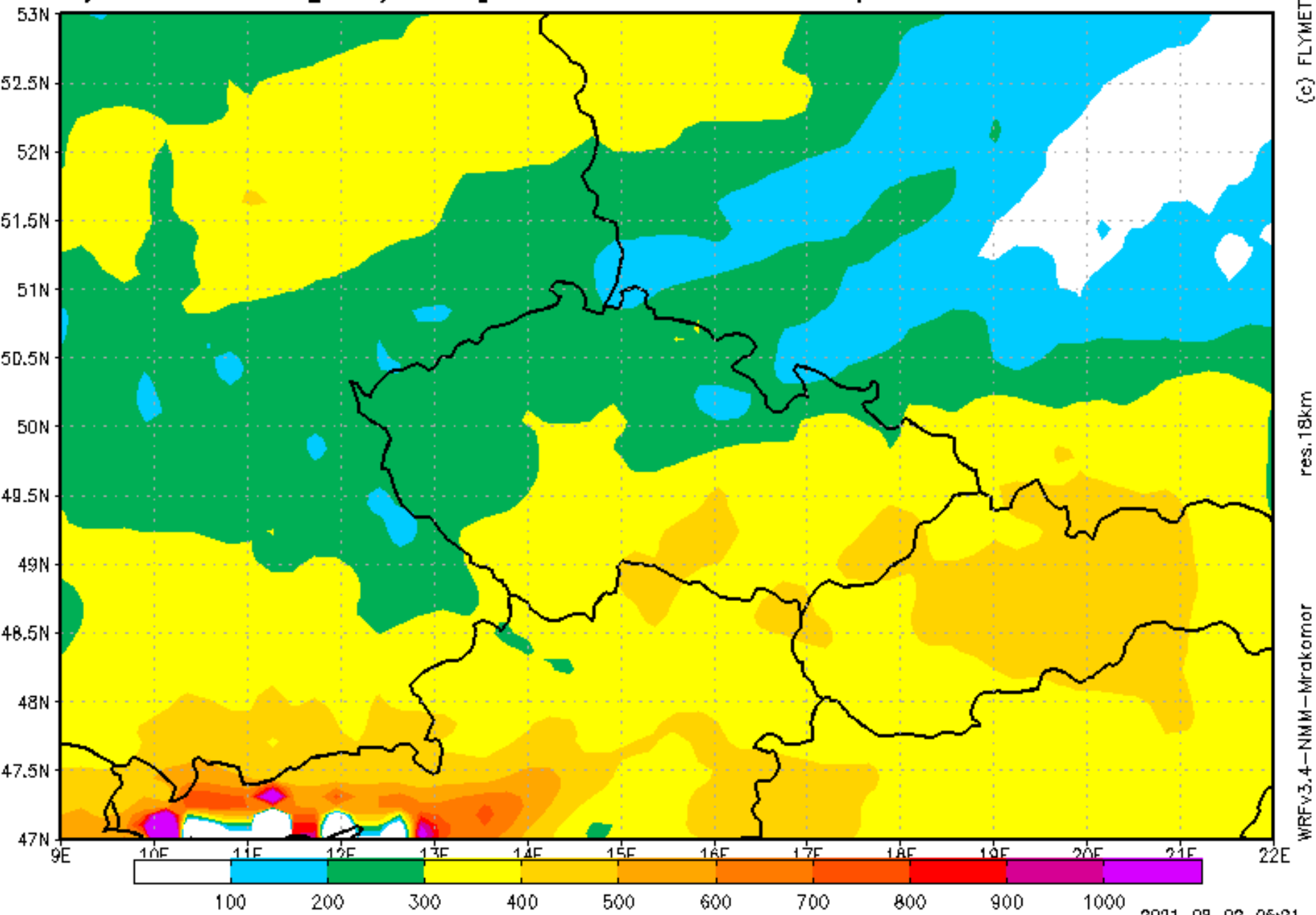
+12

start: Mon 02-08-2021 00 UTC

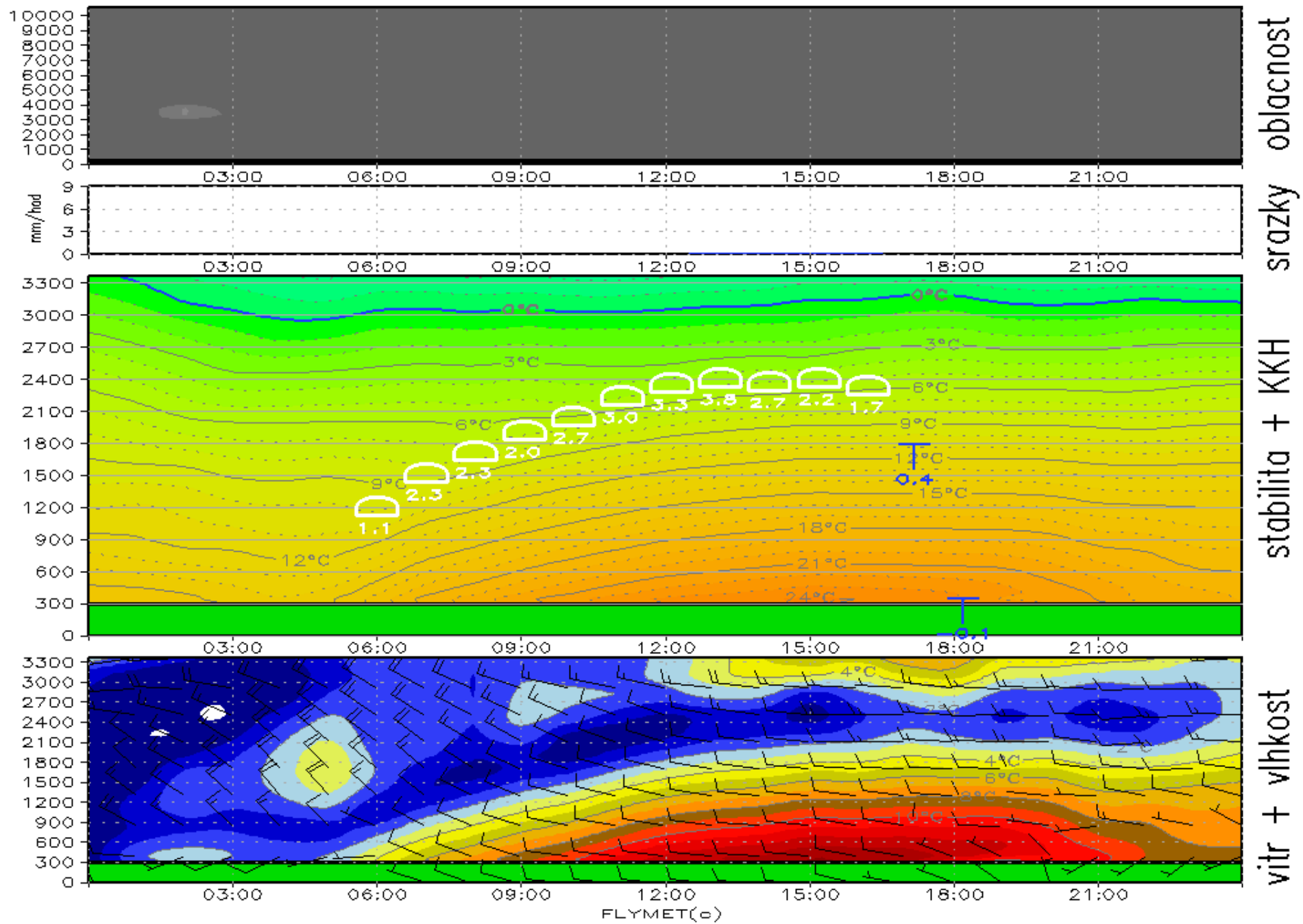
valid: Mon 02-08-2021 12 UTC



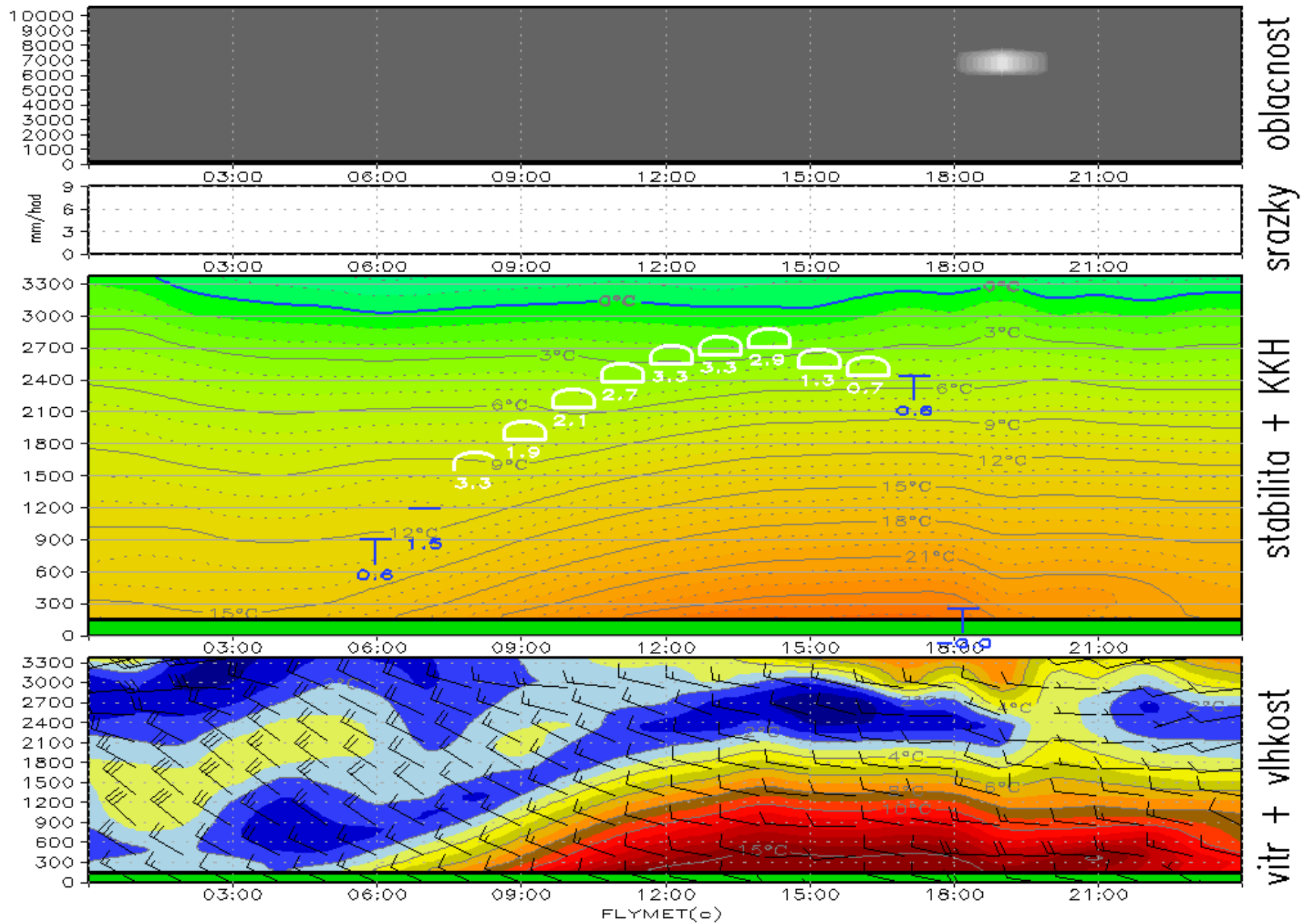
Vyuzitelnost [km/den] 9:00–16:59 UTC pondeli 02. 08. 2021



Meteogram PŘÍEVIDZA na pondělí 02.08.2021



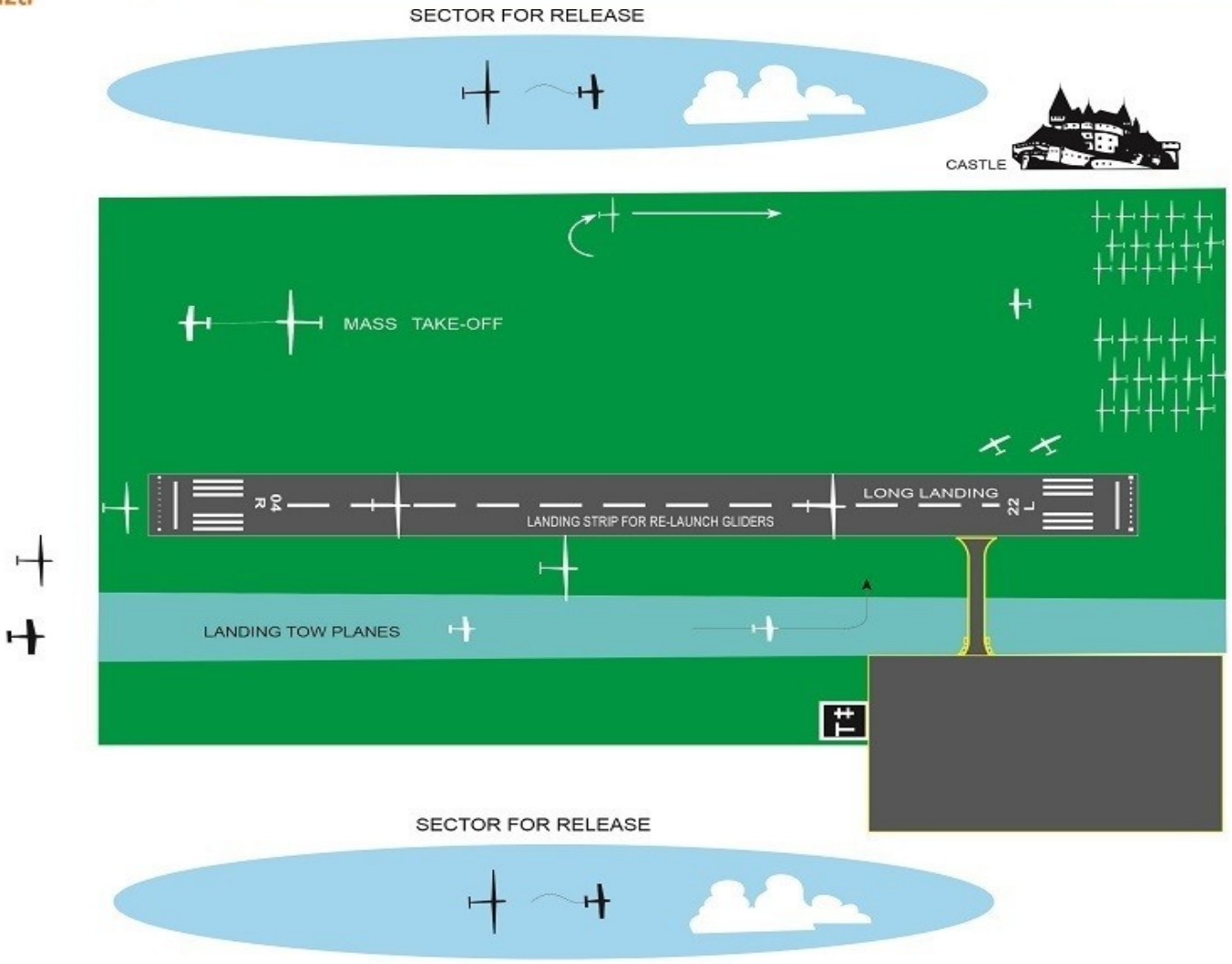
Meteogram NITRA na pondeli 02.08.2021



Safety briefing

A. Take-off from the runway 22 Alternative A – Southern wind up to 10kt

A



RWY 22

LAUNCHING
AND AIR TOW
PROCEDURES
FOR RUNWAY
22
Landing for Re-Launch
04



Club class task

AAT 120.04 - 245.16km

Time: 02:00

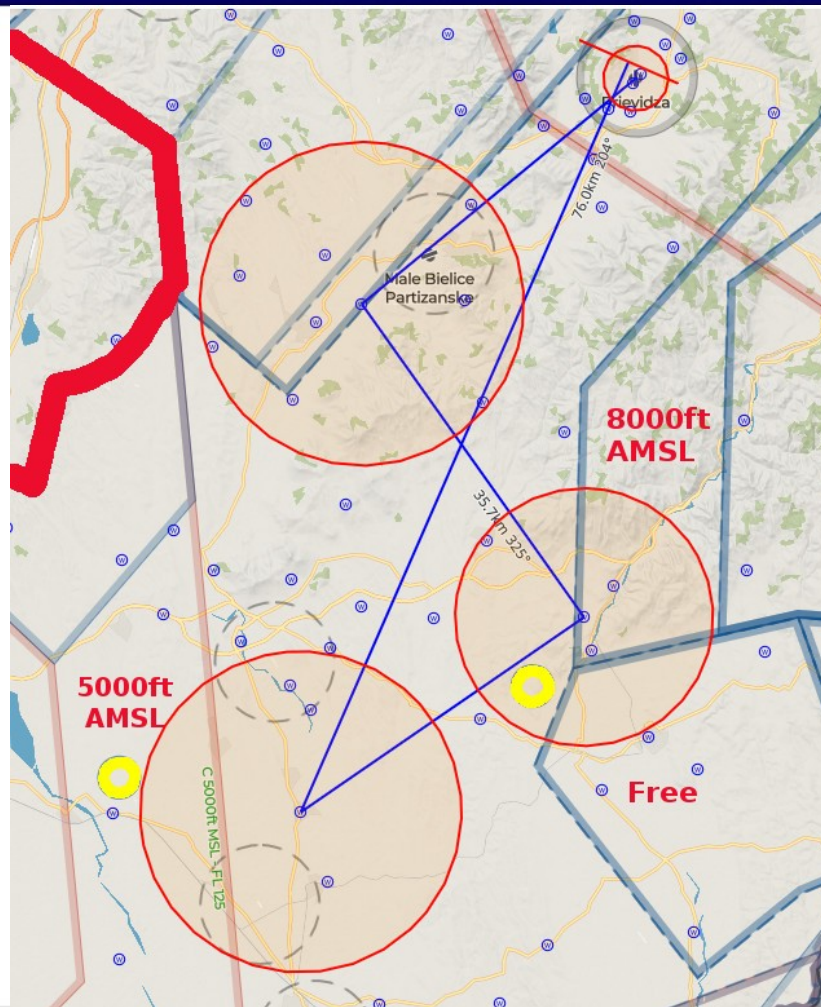
001 BOJNICE

171 KOMJATICE

177 KOZAROVCE

036 BOSANY

006 PRIEVIDZA





15 m class task

AAT 141.64 – 275.51 km

Time: 02:00:00

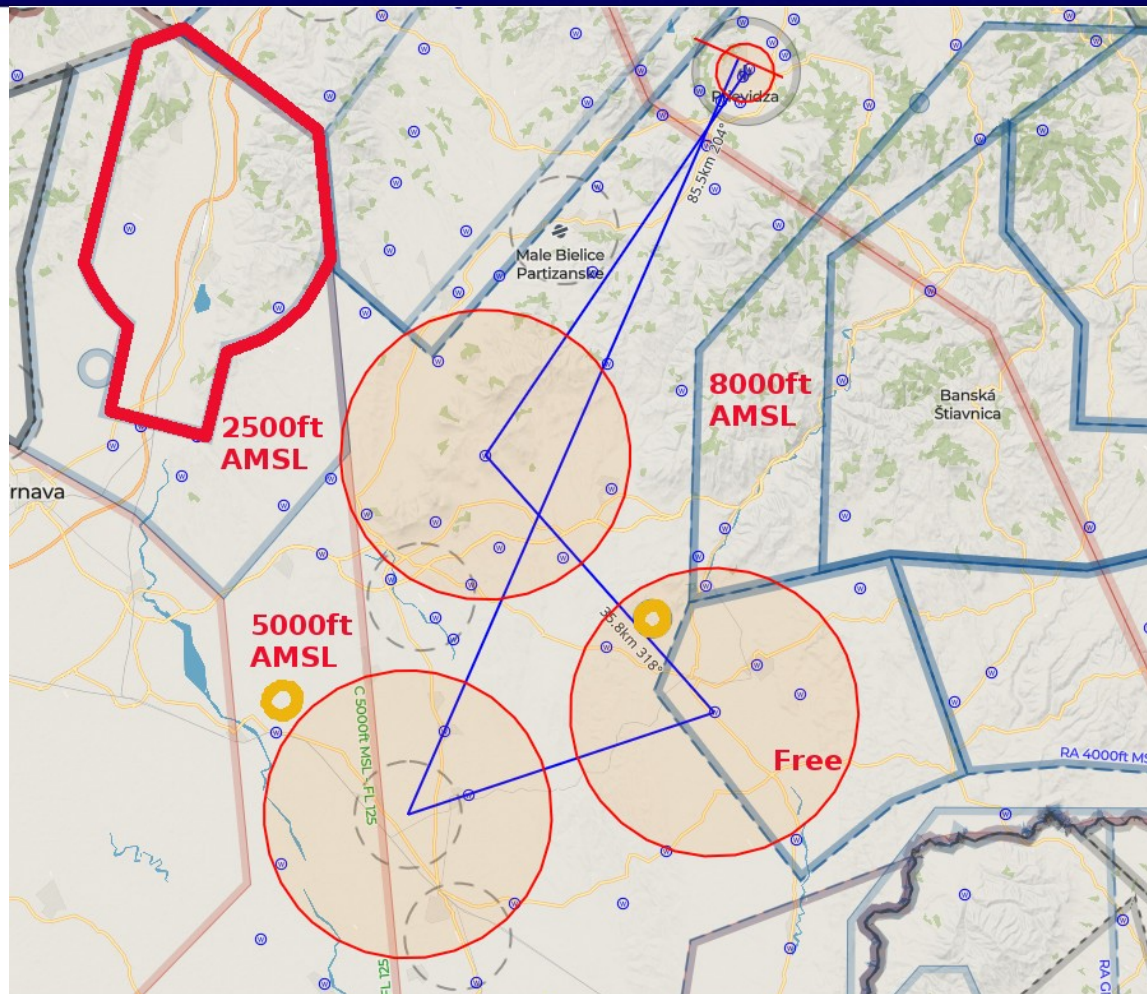
001 BOJNICE

255 LZSY

414 TEKOVSKY HRADOK

102 GYMES

001 PRIEVIDZA

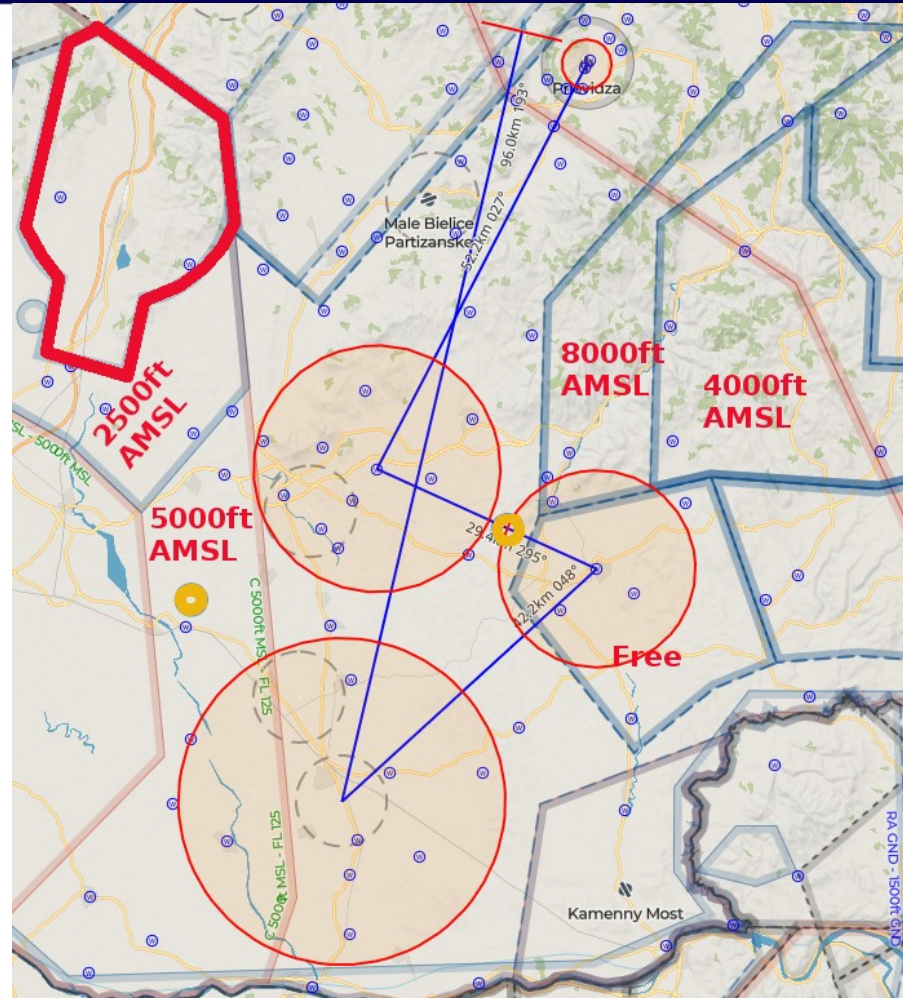




Combi class task

AAT 151.77 - 303.65km
Time: 02:00

298 NITR RUDNO
248 LZNZ
212 LEVICE
053 CELADICE
006 PRIEVIDZA





Notices

MAX. ALTITUDE: Czech Republic FL095 (except controlled areas). Poland FL095 (except controlled areas).

PERMANENTLY PROHIBITED AREAS: LZP1 MOCHOVCE, LZP29 Jaslovské Bohunice, LZP23 Sala, Tatry CTR, Poprad TMA 1,2,3,4, Bratislava TMA 1, 2, 4, LZR10 Rutol, LZR225, ,LZR225A,B,C; BA CTA EAST-GLD, Bratislava CTA Sector West

PROHIBITED AREA FOR TODAY: LZR60B, LZTRA06B, Piestany CTR, Piestany TMA 1, 2, Zilina CTR, Zilina TMA 1,2,3 without GLDA Martinky

MINIMUM HEIGHT ON THE FINISH RING: 310 M MSL

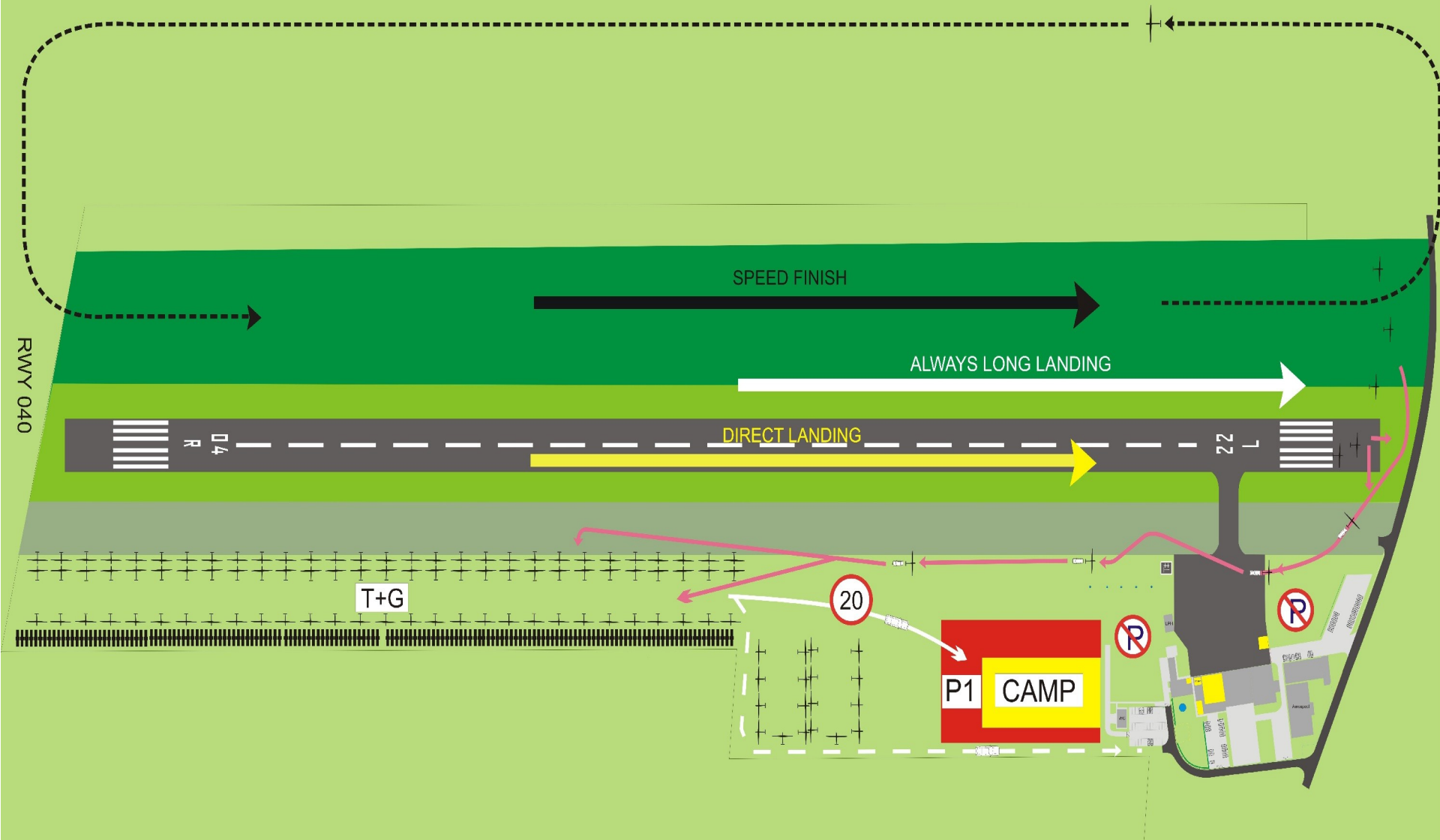
Warning: None

Outlanding: text message: +421 908 706 340



Arrivals 040 - approach from the south

Picture 4a.





Safety briefing

Finish ring

Minimal altitude on finish ring is 310m AMSL





Take off

11:30





Fly safely!

